

WAAS CH <b>72822</b> <b>W03A</b>	APP CRS <b>029°</b>	Rwy Idg TDZE Apt Elev	<b>6501</b> <b>246</b> <b>246</b>
--	------------------------	-----------------------------	---

# RNAV (GPS) RWY 3

RALEIGH EXEC JETPORT AT SANFORD-LEE COUNTY (TTA)

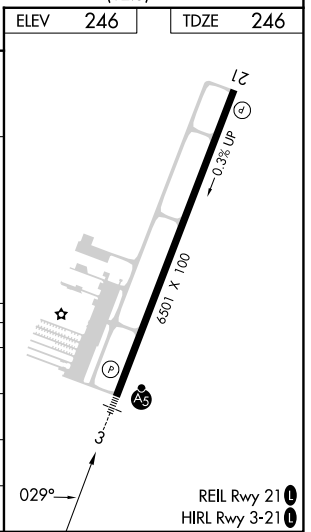
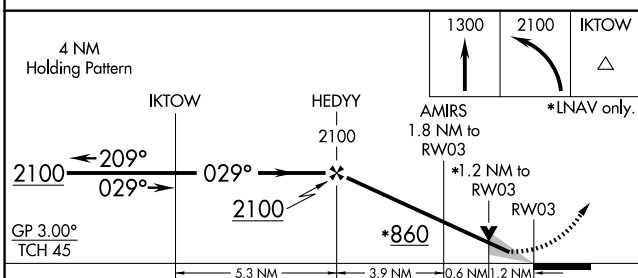
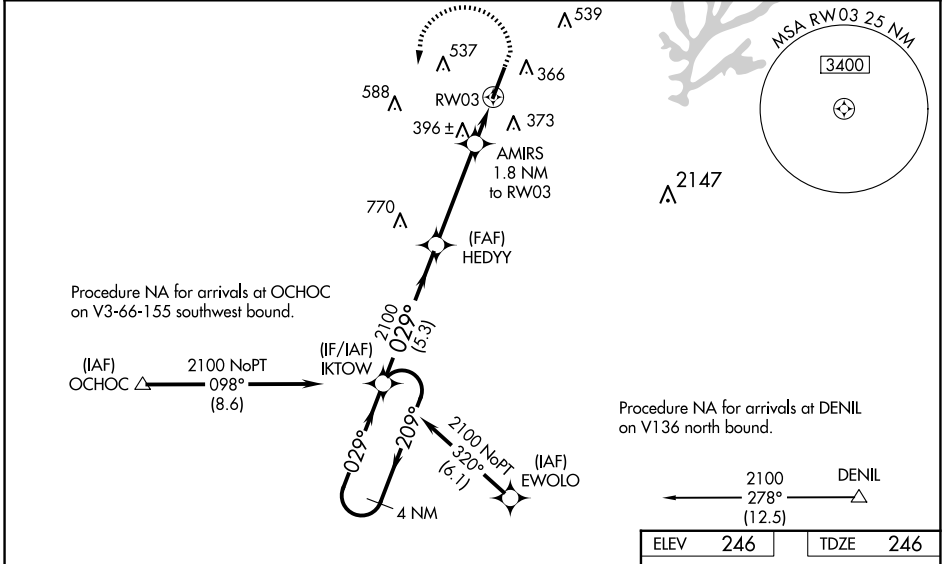
**▼** Baro-VNAV NA when using Raleigh/Durham altimeter setting. For uncompensated Baro-VNAV systems, LNAV/VNAV NA below -15°C (5°F) or above 54°C (130°F). DME/DME RNP-0.3 NA.

**▲** When local altimeter setting not received, use Raleigh/Durham altimeter setting and increase all DA 81 feet and all MDA 100 feet. Increase LNAV/VNAV all Cats visibility to 1½ mile, LNAV Cats C and D visibility to 1 mile, and Circling Cat C visibility to 2 mile and Cat D visibility to 2¾ mile. For inop MALSRL, increase LNAV/VNAV all Cats visibility to 1¼ mile and LNAV Cats C and D visibility to 1½ mile. For inop MALSRL when using Raleigh/Durham altimeter setting, increase LPV all Cats visibility to 7⁄8 mile and LNAV Cats C and D visibility to 1½ mile. VDP NA when using Raleigh/Durham altimeter setting.

**MALSRL**

**MISSED APPROACH:**  
Climb to 1300 then climbing left turn to 2100 direct IKTOW and hold.

AWOS-3 <b>120.625</b>	RALEIGH APP CON <b>125.3 353.675</b>	UNICOM <b>123.075 (CTAF) 0</b>	GCO <b>135.075</b>
--------------------------	---	-----------------------------------	-----------------------



CATEGORY	A	B	C	D
LPV DA		446-½	200 (200-½)	
LNAV/VNAV DA		634-7⁄8	388 (400-7⁄8)	
LNAV MDA	660-½	414 (500-½)	660-¾	414 (500-¾)
<b>C</b> CIRCLING	760-1 514 (600-1)	820-1 574 (600-1)	840-1½ 594 (600-1½)	960-2¼ 714 (800-2¼)

# RNAV (GPS) RWY 3

SE-2, 20 FEB 2025 to 20 MAR 2025

SE-2, 20 FEB 2025 to 20 MAR 2025