

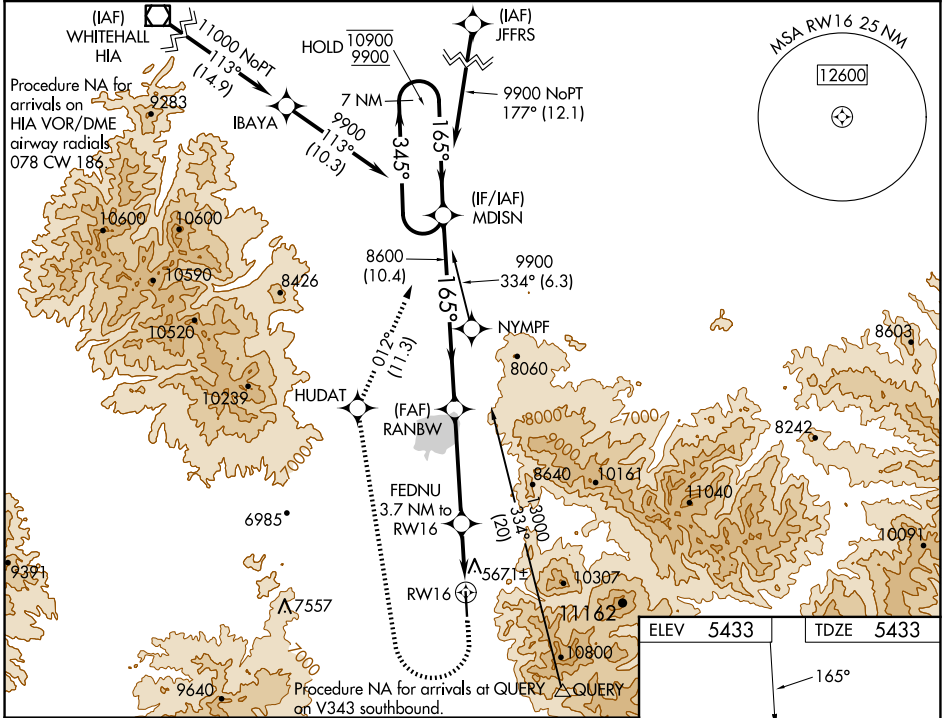
WAAS CH <b>65735</b> <b>W16A</b>	APP CRS <b>165°</b>	Rwy Idg TDZE Apt Elev	<b>7600</b> <b>5433</b> <b>5433</b>
--	------------------------	-----------------------------	---

# RNAV (GPS) RWY 16

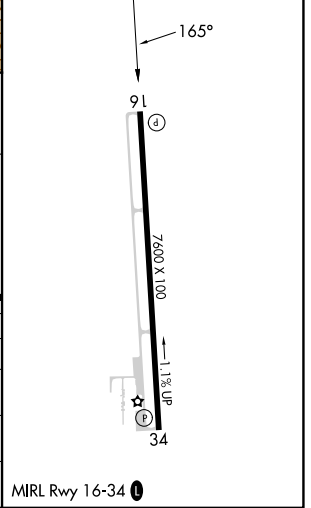
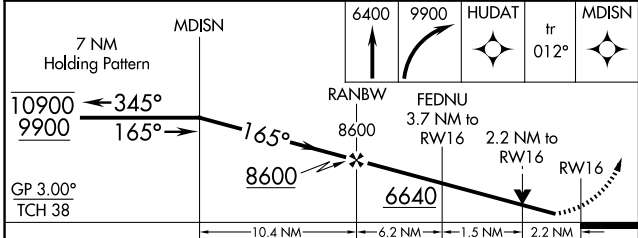
ENNIS BIG SKY (EKS)

RNP APCH-GPS.	MISSED APPROACH: (Do not exceed 185K until MDISN) Climb to 6400 then climbing right turn to 9900 direct HUDAT and on track 012° to MDISN and hold.
<p>Circling NA east of Rwy 16-34. Rwy 16 helicopter visibility reduction below 3/4 SM NA. Baro-VNAV NA. -24°C</p>	

AWOS-3P <b>119.85</b>	BIG SKY APP CON ★ <b>118.975 226.675</b>	UNICOM <b>122.8 (CTAF)</b>
--------------------------	---	-------------------------------



ELEV 5433	TDZE 5433
-----------	-----------



CATEGORY	A	B	C	D
LPV DA	5708-1 275 (300-1)			
LNAV/VNAV DA	6625-5 1192 (1200-5)			
LNAV MDA	6160-1 727 (800-1)	6160-1¼ 727 (800-1¼)	6160-2 727 (800-2)	6160-2¼ 727 (800-2¼)
CIRCLING	6160-1 727 (800-1)	6160-1¼ 727 (800-1¼)	6160-2 727 (800-2)	6160-2¼ 727 (800-2¼)

NW-1, 20 FEB 2025 to 20 MAR 2025

NW-1, 20 FEB 2025 to 20 MAR 2025