

TAKEOFF OBSTACLE NOTES

Rwy 17: Bush 11' from DER, 101' left of centerline, 4' AGL/5024' MSL.
 Bush 92' from DER, 509' left of centerline, 5' AGL/5025' MSL.
 Pole 1021' from DER, 498' right of centerline, 35' AGL/5053' MSL.
 Pole 1223' from DER, 202' right of centerline, 35' AGL/5058' MSL.
 Tree 2250' from DER, 1009' right of centerline, 85' AGL/5099' MSL.
 Rwy 35: Bush 68' from DER, 499' right of centerline, 5' AGL/4990' MSL.

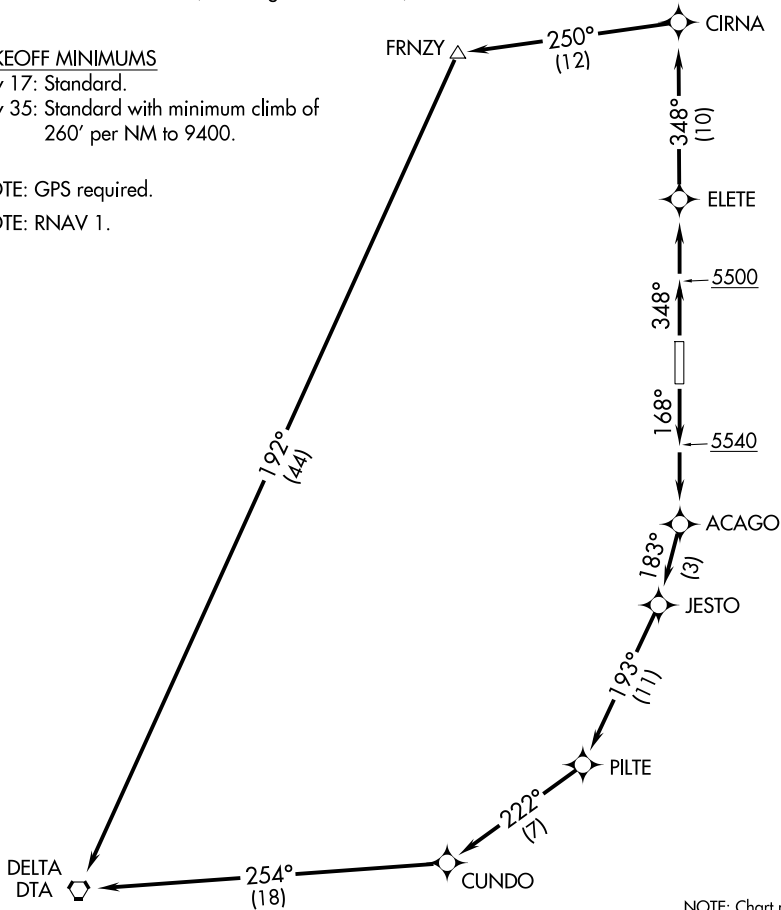
SALT LAKE CENTER
127.825 239.025

TAKEOFF MINIMUMS

Rwy 17: Standard.
 Rwy 35: Standard with minimum climb of
 260' per NM to 9400.

NOTE: GPS required.

NOTE: RNAV 1.



NOTE: Chart not to scale.

DEPARTURE ROUTE DESCRIPTION

TAKEOFF RUNWAY 17: Climb heading 168° to 5540, then direct ACAGO, thence. . . .

TAKEOFF RUNWAY 35: Climb heading 348° to 5500, then direct ELETE, thence. . . .

. . . .on depicted route to DTA VORTAC. Climb to 11000 or ATC assigned altitude.