

WAAS CH 63221 W17A	APP CRS 168°	Rwy Idg TDZE Apt Elev	6300 5005 5022
--	------------------------	-----------------------------	---

RNAV (GPS) RWY 17

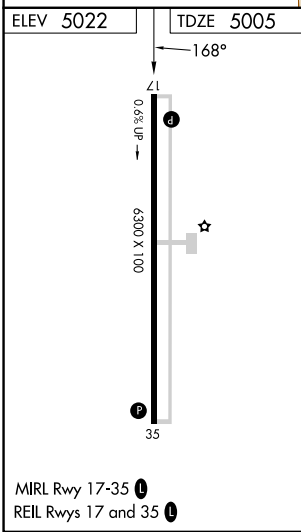
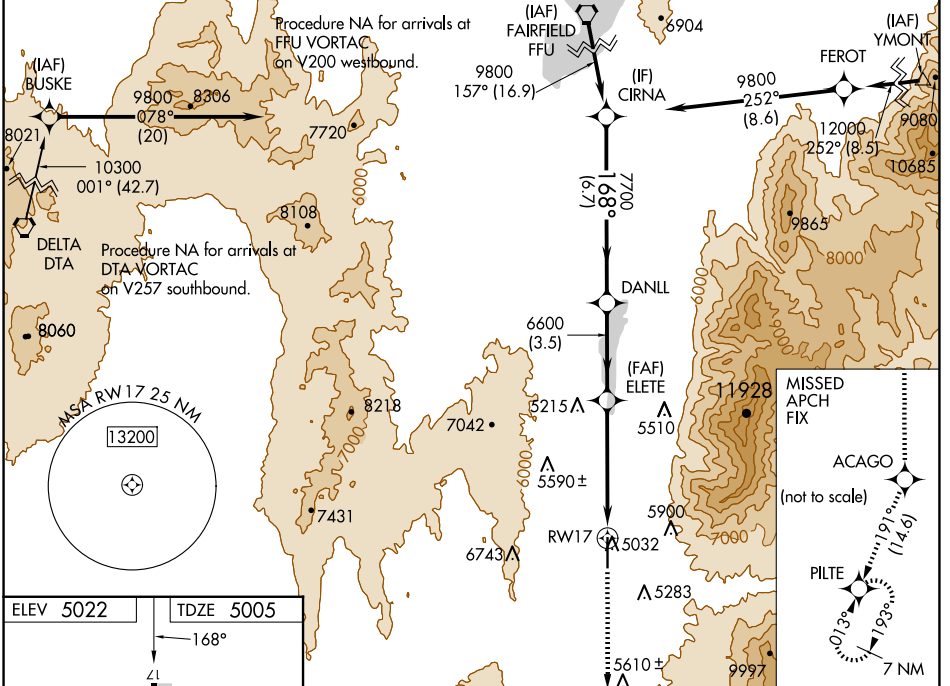
NEPHI MUNI (U14)

RNP APCH - GPS.

NA Baro-VNAV NA when using Provo Muni altimeter setting. For uncompensated Baro-VNAV systems, LNAV/VNAV NA below -24°C or above 12°C. When local altimeter setting not received, use Provo altimeter setting: increase LPV DA to 5577 feet and visibility all Cats ½ SM, increase LNAV/VNAV DA to 5836 feet and visibility all Cats ½ SM; increase all MDAs 160 feet and LNAV and Circling visibilities Cats A/B ½ SM. Circling Cat C NA. VDP NA with Provo Muni altimeter setting.

MISSED APPROACH:
Climb to 11400 direct
ACAGO and on track
191° to PILTE and hold.

AWOS-3 118.275	SALT LAKE CENTER 127.825 239.025	UNICOM 123.075 (CTAF) 0
--------------------------	--	--



11400	ACAGO	tr 191°	PILTE	CIRNA
*LNAV only.		*2.4 NM to RW17		
RW17		ELETE	DANLL	9800
6600		7700	168°	
GP 3.00°		6600	7700	TCH 40
2.4 NM		2.5 NM	3.5 NM	6.7 NM
CATEGORY	A	B	C	D
LPV DA	5433-1½		428 (400-1½)	
LNAV/VNAV DA	5692-2½		687 (700-2½)	
LNAV MDA	5800-1 795 (800-1)	5800-1¼ 795 (800-1¼)	5800-2½	795 (800-2½)
CIRCLING	5800-1 778 (800-1)	5800-1¼ 778 (800-1¼)	6920-3 1898 (1900-3)	NA

SW-4, 20 FEB 2025 to 20 MAR 2025

SW-4, 20 FEB 2025 to 20 MAR 2025