

RNAV (GPS) Y RWY 18

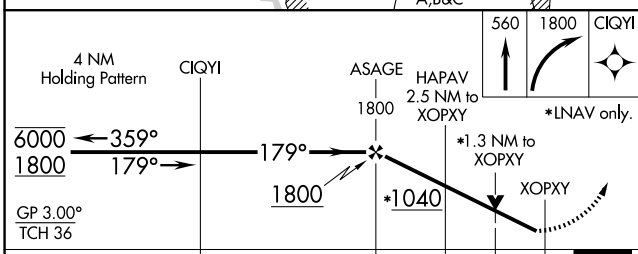
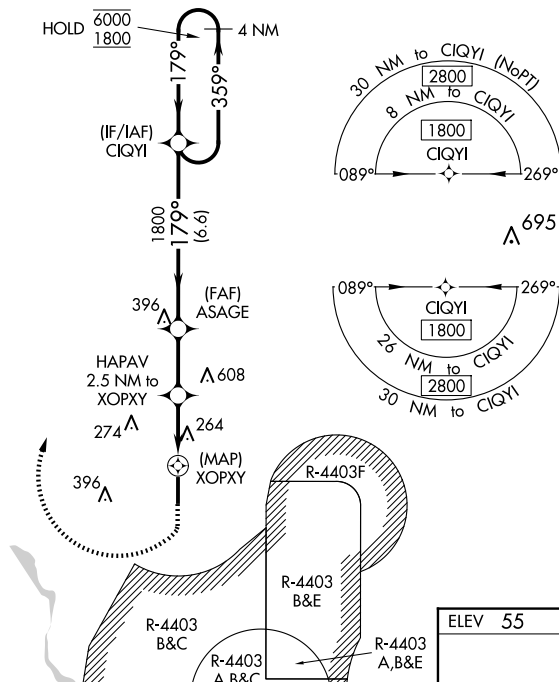
PICAYUNE MUNI (MJD)

WAAS CH 42938 W18A	APP CRS 179°	Rwy Idg 5000 TDZE 55 Apt Elev 55
----------------------------------------	------------------------	-------------------------------------------------------------

RNP APCH.
 ⚠ Baro-VNAV and VDP NA when using Stennis Intl altimeter setting. Rwy 18 helicopter visibility reduction below 3/4 SM NA. For uncompensated Baro-VNAV systems, LNAV/VNAV NA below -15°C or above 5°C. When local altimeter setting not received, use Stennis Intl altimeter setting: increase LPV DA to 377 and visibility all Cats 1/8 mile; increase LNAV/VNAV DA to 621 and visibility all Cats 1/8 mile; increase all MDA 40 feet. Procedure NA when R-4403 B/C/E is active.

MISSED APPROACH: (Do not exceed 185K) Climb to 560 then climbing right turn to 1800 direct CIQYI and hold.

AWOS-3PT 119.075	GULFPORT APP CON * 124.6 354.1	UNICOM 122.8 (CTAF) 0
----------------------------	------------------------------------------	---------------------------------



ELEV 55	TDZE 55
---------	---------

A vertical scale diagram showing altitudes: 81, 5000 X 75, and 36. A star symbol is positioned at the 81 level. A 179° heading arrow points downwards.

4 NM Holding Pattern	CIQYI	ASAGE	HAPAV 2.5 NM to XOPXY	560	1800	CIQYI
GP 3.00° TCH 36	1800	*1040	*1.3 NM to XOPXY	*LNAV only.		
	6.6 NM	2.4 NM	1.2 NM	1.3 NM	0.5	

MIRL Rwy 18-36 0

CATEGORY	A	B	C	D
LPV DA	343-1		288 (300-1)	
LNAV/VNAV DA	587-1 7/8		532 (600-1 7/8)	
LNAV MDA	520-1	465 (500-1)	520-1 3/8	465 (500-1 3/8)
CIRCLING	520-1 465 (500-1)	580-1 525 (600-1)	NA	

SC-4, 20 FEB 2025 to 20 MAR 2025

SC-4, 20 FEB 2025 to 20 MAR 2025