

APP CRS	Rwy Idg	<b>5510</b>
<b>175°</b>	TDZE	<b>4041</b>
	Apt Elev	<b>4044</b>

# RNAV (GPS) RWY 17

LEMHI COUNTY (SMN)

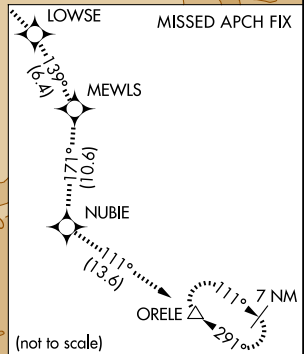
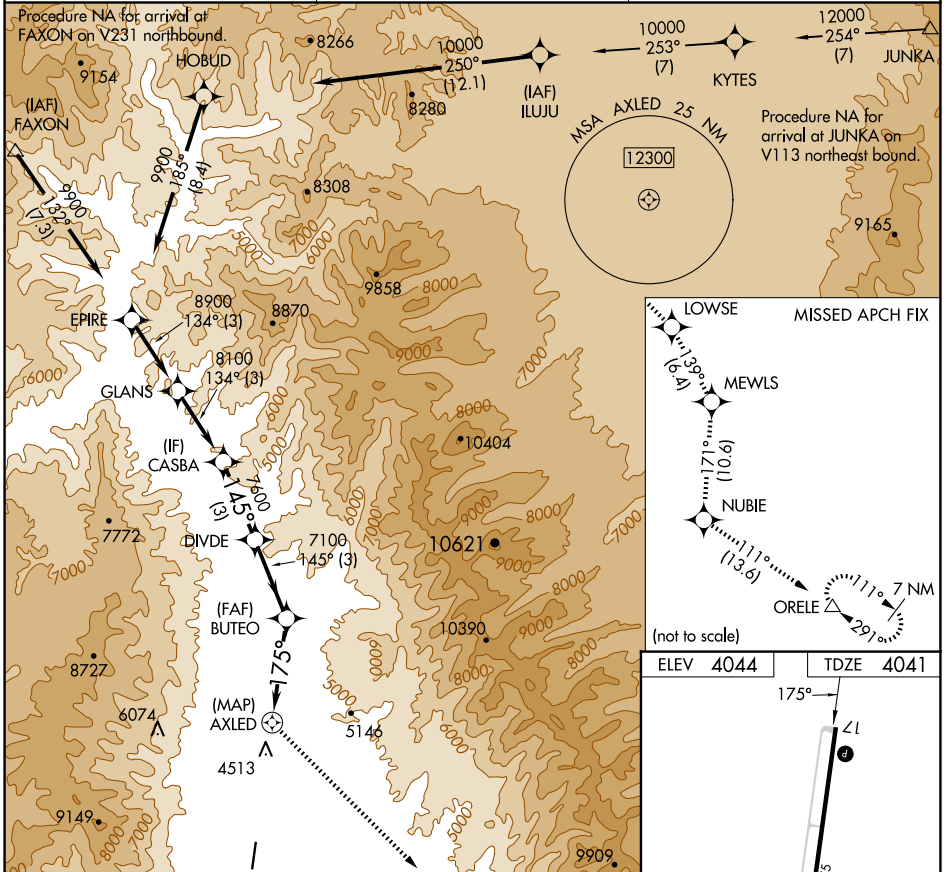
**NA** DME/DME RNP-0.3 NA. Night landing: Rwy 35 NA.  
**NA** Circling NA for Cats B and C east of Rwy 17-35.  
**-13°C** Helicopter visibility reduction below 3/4 SM NA.

**MISSED APPROACH:** Climb to 13600 direct LOWSE and track 139° to MEWLS and track 171° to NUBIE and track 111° to ORELE and hold, continue climb-in-hold to 13600.

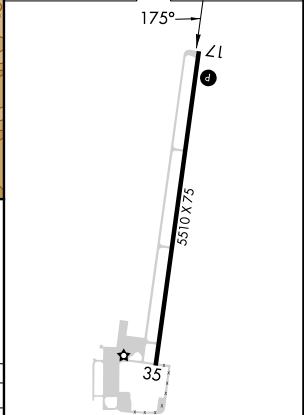
AWOS-3PT  
**135.075**

SALT LAKE CENTER  
**132.4 338.3**

UNICOM  
**122.8 (CTAF)**



ELEV 4044	TDZE 4041
-----------	-----------



13600	LOWSE	MEWLS	CASBA	
↑	tr 139°		BUTEO	DIVDE
			7100	7600
			8100	
			4.3 NM	3.8 NM
			3 NM	3 NM
CATEGORY	A	B	C	D
RNAV MDA	5740-5 1699 (1700-5)			NA
CIRCLING	5740-5 1696 (1700-5)		6180-5 2136 (2200-5)	NA

REIL Rwy 17 and 35  
MIRL Rwy 17-35

NW-1, 20 FEB 2025 to 20 MAR 2025

NW-1, 20 FEB 2025 to 20 MAR 2025