

VOR/DME LKT <b>113.5</b> Chan <b>82</b>	APP CRS <b>043°</b>	Rwy Idg TDZE Apt Elev <b>4044</b>	N/A N/A 4044
---	------------------------	--------------------------------------	--------------------

# VOR/DME-B

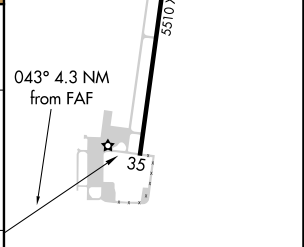
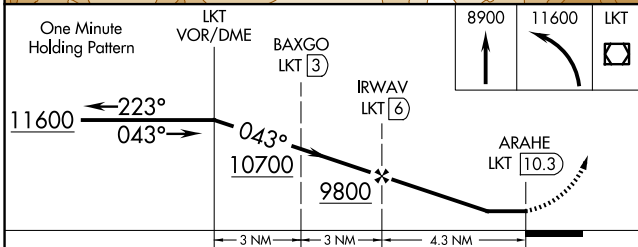
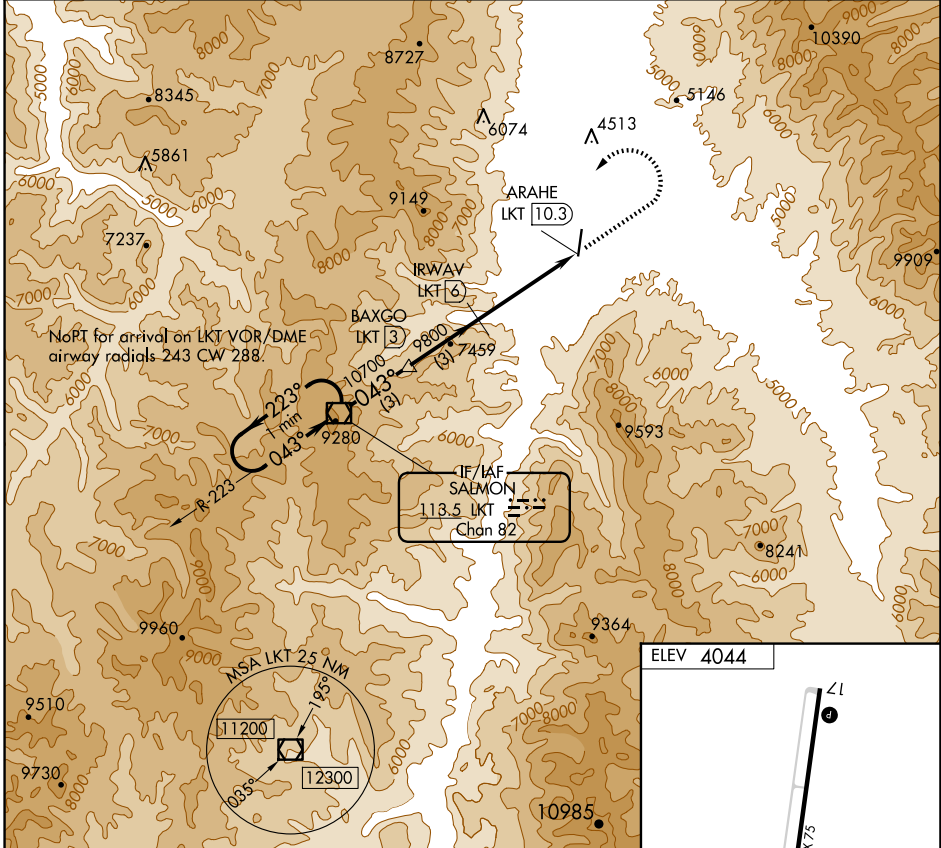
LEMHI COUNTY (SMN)

**NA**  
-13°C

Circling NA for Cat C east of Rwy 17-35.  
Night Landing: Rwy 35 NA.

MISSED APPROACH: Climb to 8900 then climbing left turn to 11600 direct LKT VOR/DME and hold, continue climb-in-hold to 11600.

AWOS-3PT <b>135.075</b>	SALT LAKE CENTER <b>132.4 338.3</b>	UNICOM <b>122.8 (CTAF)</b>
----------------------------	--	-------------------------------



CATEGORY	A	B	C	D
<b>CIRCLING</b>	8100-1¼ 4056 (4100-1¼)	8100-1½ 4056 (4100-1½)	8100-3 4056 (4100-3)	NA

REIL Rwys 17 and 35  
MIRL Rwy 17-35

NW-1, 20 FEB 2025 to 20 MAR 2025

NW-1, 20 FEB 2025 to 20 MAR 2025