

WAAS CH 65645 W18A	APP CRS 178°	Rwy Idg TDZE Apt Elev	3400 1131 1131
--	------------------------	-----------------------------	---

RNAV (GPS) RWY 18

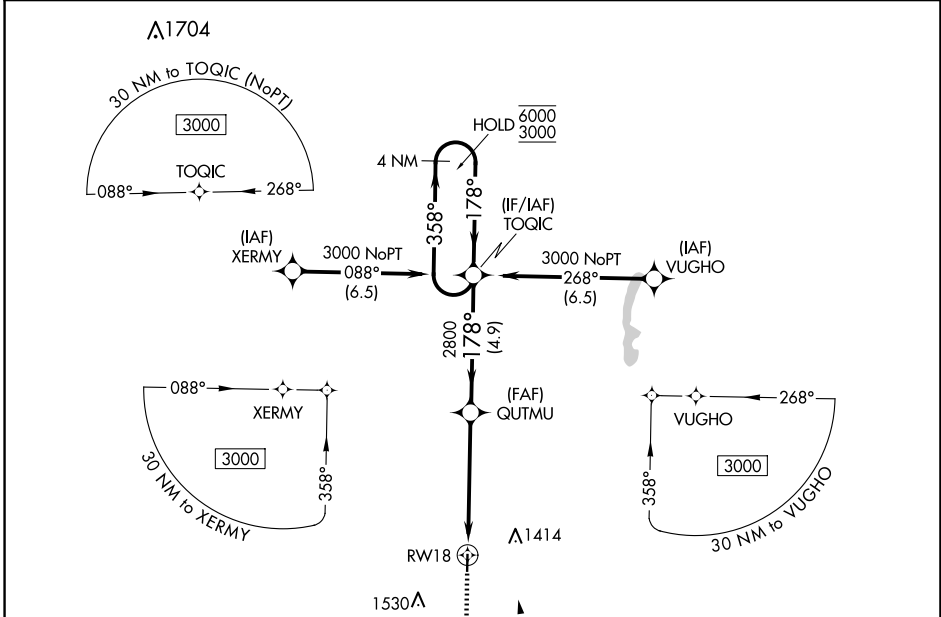
LAMONI MUNI (LWD)

RNP APCH-GPS.

⚠ Circling NA west of Rwy 18-36. Rwy 18 helicopter visibility reduction below $\frac{3}{4}$ SM NA. For uncompensated Baro-VNAV systems, LNAV/VNAV NA below -21°C or above 54°C.

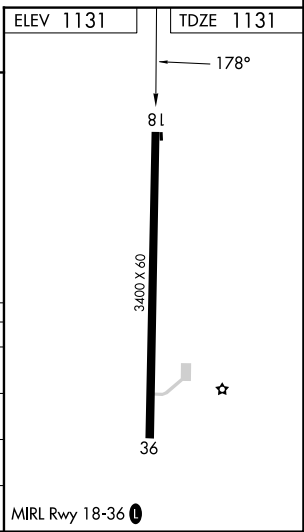
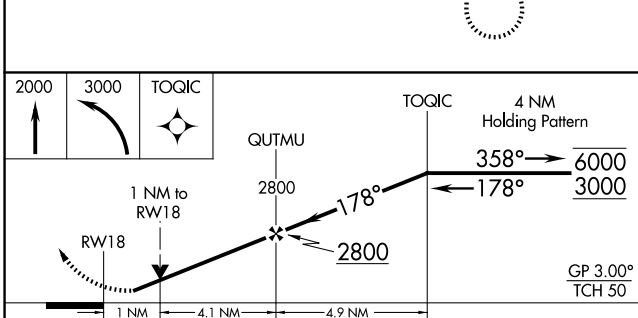
MISSED APPROACH: Climb to 2000, then climbing left turn 3000 direct TOQIC and hold.

ASOS 120.0	MINNEAPOLIS CENTER 125.65 306.95	CTAF 122.9 0
----------------------	--	-------------------------------



NC-3, 20 FEB 2025 to 20 MAR 2025

NC-3, 20 FEB 2025 to 20 MAR 2025



CATEGORY	A	B	C	D
LPV DA		1381-1	250 (300-1)	
LNAV/VNAV DA		1381-1	250 (300-1)	
LNAV MDA		1500-1	369 (400-1)	
C CIRCLING	1520-1 389 (400-1)	1720-1 589 (600-1)	1720-1½ 589 (600-1½)	1720-2 589 (600-2)

MIRL Rwy 18-36 **0**