

WAAS CH <b>56212</b> <b>W17A</b>	APP CRS <b>167°</b>	Rwy Idg <b>8500</b> TDZE <b>194</b> Apt Elev <b>194</b>
--	------------------------	---

# RNAV (GPS) RWY 17

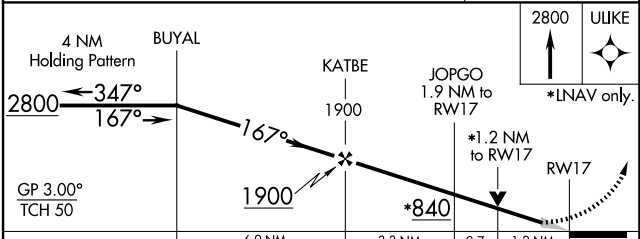
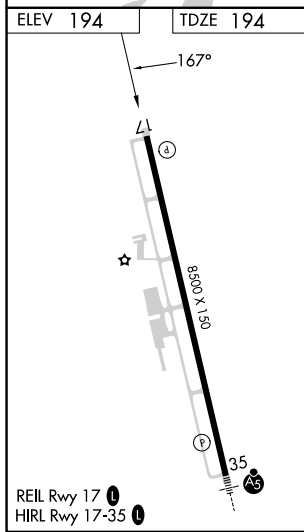
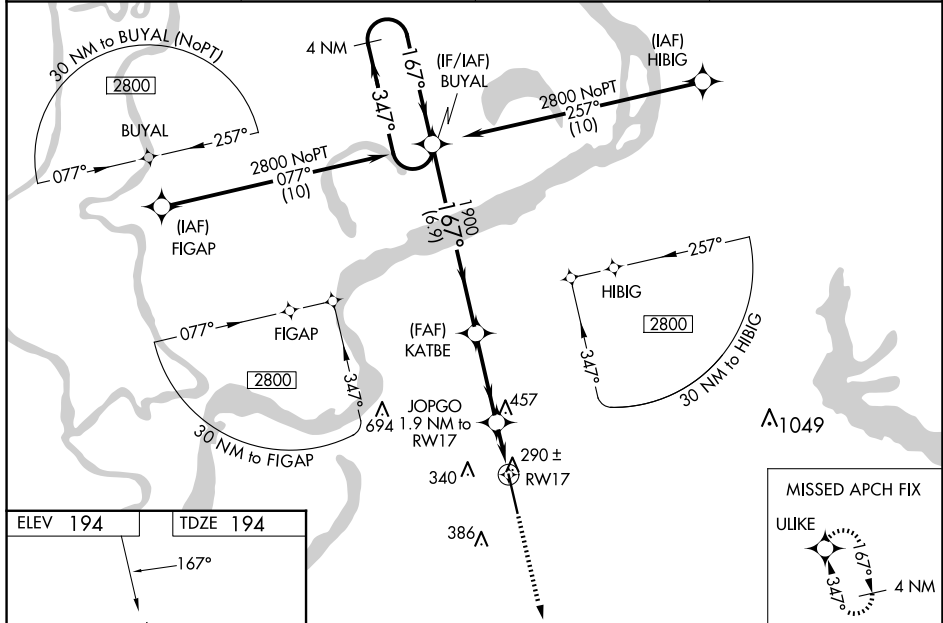
TUNICA MUNI (UTA)

RNP APCH.

**⚠** For uncompensated Baro-VNAV systems, LNAV/VNAV NA below -15°C (5°F) or above 42°C (107°F). For inop ALS, increase LNAV/VNAV visibility all Cats to ¾ SM, and LNAV Cats C, D visibility to 1¾ SM. Baro VNAV and VDP NA when using Memphis altimeter setting. When local altimeter setting not received, use Memphis altimeter setting and increase LPV DA to 480, LNAV/VNAV DA to 557, and all MDA 100 feet, increase LNAV/VNAV visibility all Cats to 1 SM, and Circling Cat C visibility to 1¾ SM. For inop ALS when using Memphis altimeter setting, increase LPV all Cats visibility to ¾ SM, LNAV/VNAV all Cats visibility to 1 SM, LNAV Cats C/D visibility to 1¾ SM.

MISSED APPROACH:  
Climb to 2800 direct  
ULIKE and hold.

AWOS-3 <b>118.075</b>	MEMPHIS APP CON <b>119.1 291.6</b>	CLNC DEL <b>118.9</b>	UNICOM <b>123.0 (CTAF) 0</b>
--------------------------	---------------------------------------	--------------------------	---------------------------------



CATEGORY	DISTANCE			
	A	B	C	D
LPV DA		394-¾	200 (200-¾)	
LNAV/VNAV DA		471-¾	277 (300-¾)	
LNAV MDA	640-¾	446 (500-¾)	640-1½	446 (500-1½)
CIRCLING	680-1	740-1	760-1½	760-2
	486 (500-1)	546 (600-1)	566 (600-1½)	566 (600-2)

SC-4, 20 FEB 2025 to 20 MAR 2025

SC-4, 20 FEB 2025 to 20 MAR 2025