

| | | |
|-------------|----------|-------------|
| APP CRS | Rwy Idg | 4156 |
| 082° | TDZE | 1618 |
| | Apt Elev | 1635 |

RNAV (GPS) RWY 8

LEXINGTON (9S9)

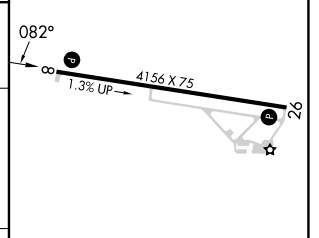
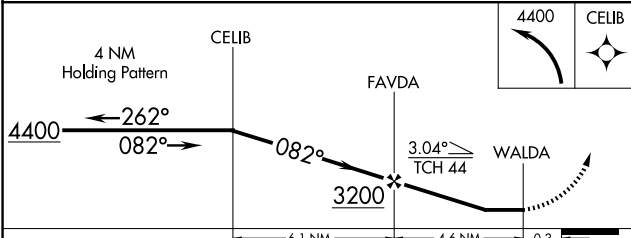
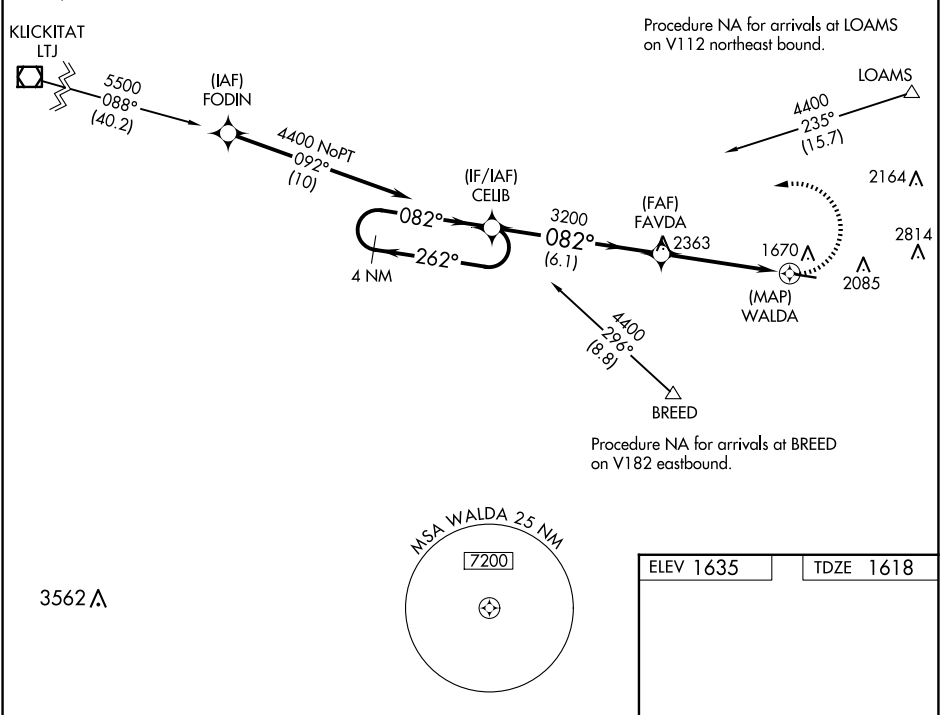
RNP APCH - GPS.

NA Circling Cat D NA when using HRI altimeter setting. When local altimeter not received, use HRI altimeter setting and increase all MDAs 220 feet and LNAV visibility Cat C ½ SM, and Circling visibility Cats A and B ¼ SM. Procedure NA at night. Rwy 8 helicopter visibility reduction below 1 SM NA.

MISSED APPROACH: Climbing left turn to 4400 direct CELIB and hold.

| | | |
|--------------------------|---------------------------------------|------------------------|
| AWOS-3 134.475 | SEATTLE CENTER 132.6 269.35 | CTAF 122.9 0 |
|--------------------------|---------------------------------------|------------------------|

Procedure NA for arrival on LTJ VOR/DME airway radials 032 CW 116.



| | | | | | |
|----------|-----------------------|-------------------------|-------------------------|-------------------------|----------------------------------------|
| CATEGORY | A | B | C | D | |
| LNAV MDA | 2120-1 | 502 (500-1) | 2120-1½ | 502 (500-1½) | |
| CIRCLING | 2380-1 745 (800-1) | 2460-1¼ 825 (900-1¼) | 2700-3 1065 (1100-3) | 3180-3 1545 (1600-3) | MIRL Rwy 8-26 0 REIL Rws 8 and 26 0 |

NW-1, 20 FEB 2025 to 20 MAR 2025

NW-1, 20 FEB 2025 to 20 MAR 2025