

APP CRS	Rwy Idg	N/A
210°	TDZE	N/A
	Apt Elev	1635

RNAV (GPS)-A

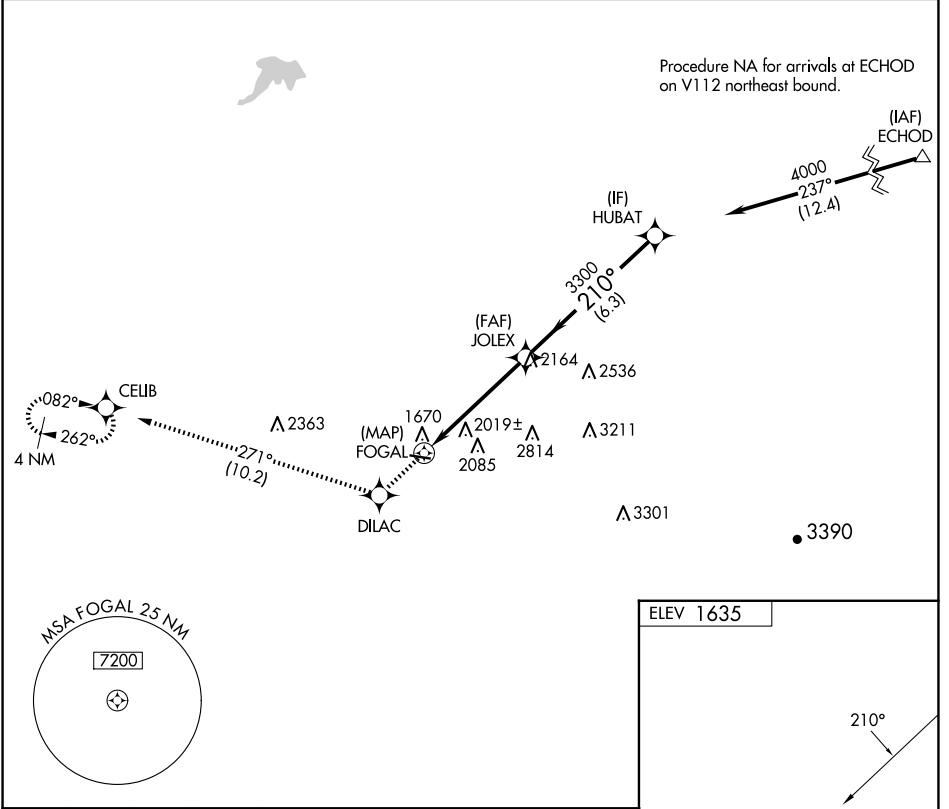
LEXINGTON (9S9)

RNP APCH - GPS.

NA Circling Cat D NA when using HRI altimeter setting. When local altimeter not received, use HRI altimeter setting and increase all MDAs 220 feet and Circling visibility Cats A and B ¼ SM. Procedure NA at night. Rwy 8 and 26 helicopter visibility reduction below 1 SM NA.

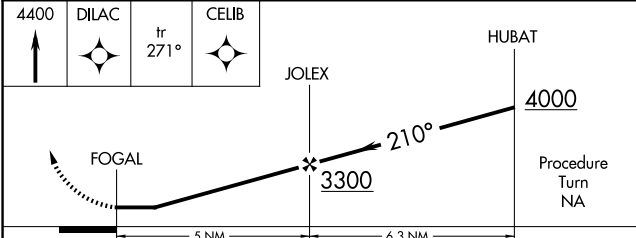
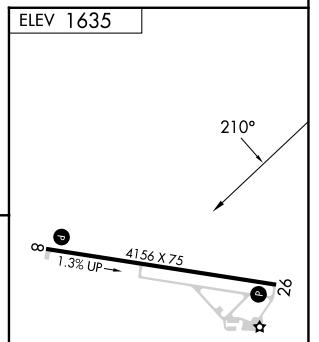
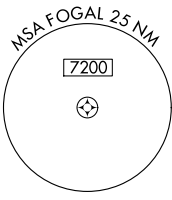
MISSED APPROACH: Climb to 4400 direct DILAC and on 271° track to CELIB and hold.

AWOS-3 134.475	SEATTLE CENTER 132.6 269.35	CTAF 122.9
--------------------------	---------------------------------------	----------------------



NW-1, 20 FEB 2025 to 20 MAR 2025

NW-1, 20 FEB 2025 to 20 MAR 2025



CATEGORY	A	B	C	D
CIRCLING	2380-1 745 (800-1)	2460-1¼ 825 (900-1¼)	2700-3 1065 (1100-3)	3180-3 1545 (1600-3)

MIRL Rwy 8-26

REIL Rwys 8 and 26