

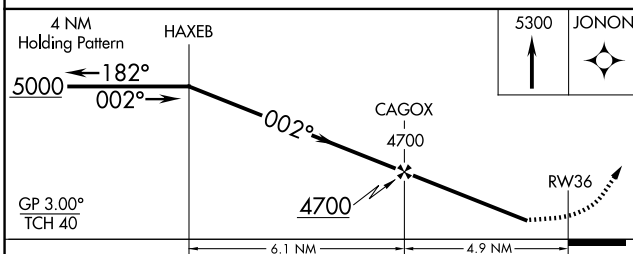
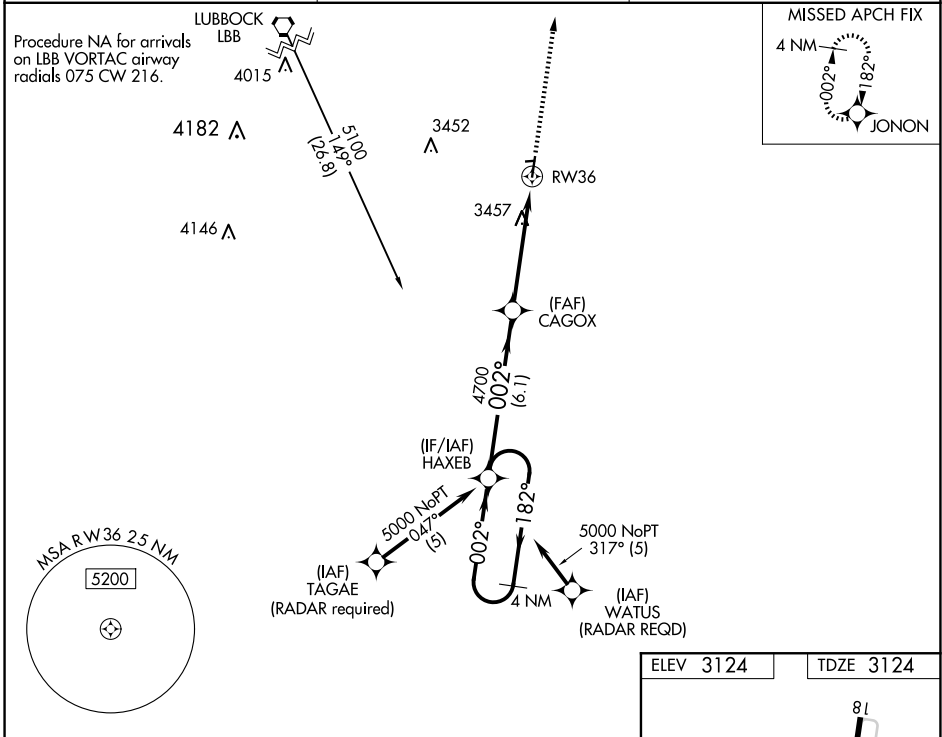
WAAS CH 86939 W36A	APP CRS 002°	Rwy Idg 4244 TDZE 3124 Apt Elev 3124
---------------------------------	------------------------	---

RNAV (GPS) RWY 36

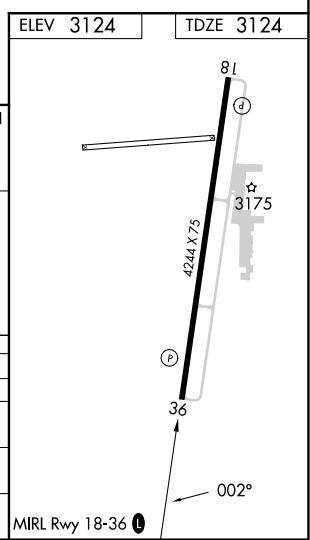
CITY OF SLATON/LARRY T NEAL MEML (F49)

V Baro-VNAV NA. DME/DME RNP-0.3 NA. Helicopter visibility reduction
NA below 3/4 SM NA. MISSED APPROACH: Climb to 5300 direct JONON and hold.

LBB ASOS 125.3 270.275	LUBBOCK APP CON 119.2 351.8	UNICOM 123.0 (CTAF)
----------------------------------	---------------------------------------	-------------------------------



CATEGORY	A	B	C	D
LPV DA		3883-3	759 (800-3)	
LNAV/VNAV DA		3849-3	725 (800-3)	
LNAV MDA	3760-1	636 (700-1)	3760-1 3/4	636 (700-1 3/4)
C CIRCLING	3760-1 636 (700-1)	3820-1 696 (700-1)	3820-2 696 (700-2)	3820-2 1/4 696 (700-2 1/4)



SC-2, 20 FEB 2025 to 20 MAR 2025

SC-2, 20 FEB 2025 to 20 MAR 2025