

VORTAC BRV	APP CRS	Rwy Idg TDZE	6000
114.5	314°	196	
Chan 92		Apt Elev	219

VOR RWY 33

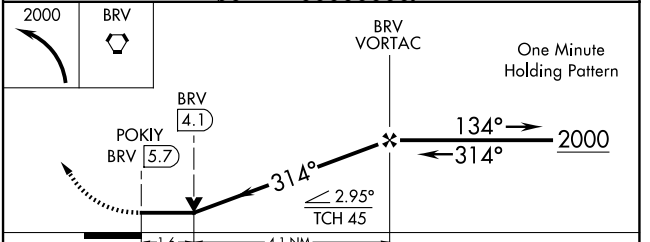
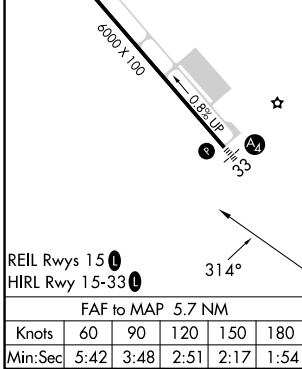
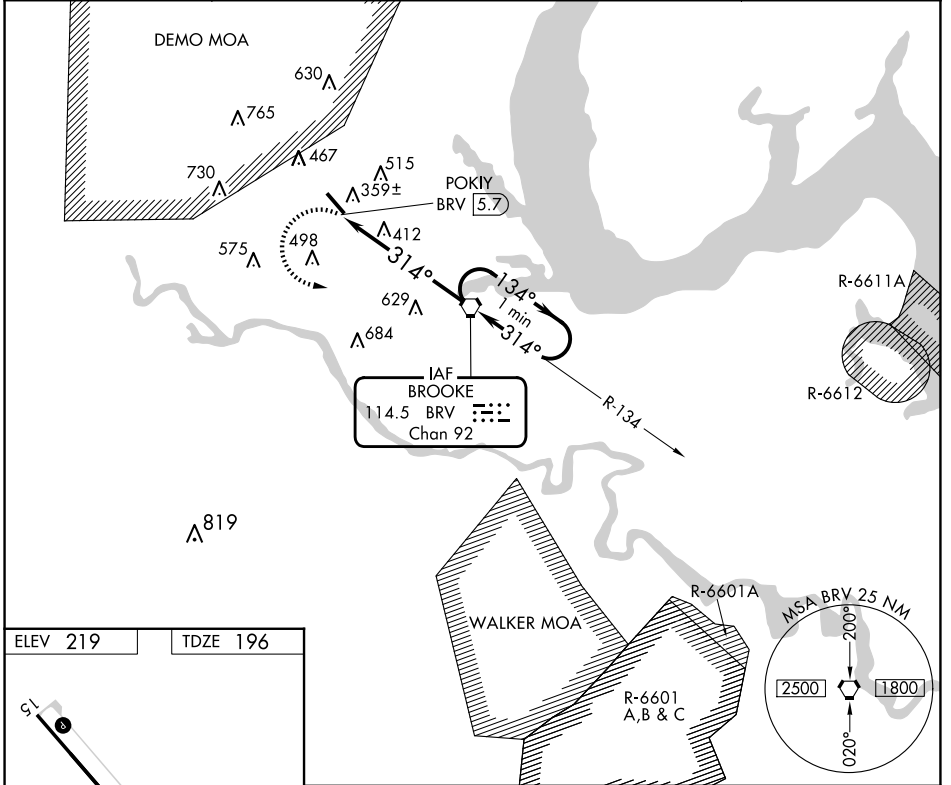
STAFFORD RGNL (R.MN)

▼ Inoperative table does not apply to Cat C. Circling Rwy 15 NA at night.

MALS 

MISSED APPROACH: Climbing left turn to 2000 direct BRV VORTAC and hold.

AWOS-3 126.325	QUANTICO APP CON * 127.05 290.375	GCO 135.075	UNICOM 122.725 (CTAF) 0
--------------------------	---	-----------------------	-----------------------------------



CATEGORY	A	B	C	D
S-33	740-3/4 544 (600-3/4)		740-1 1/2 544 (600-1 1/2)	740-1 3/4 544 (600-1 3/4)
CIRCLING	740-1 521 (600-1)	820-1 601 (700-1)	820-1 3/4 601 (700-1 3/4)	1040-2 3/4 821 (900-2 3/4)

NE-3, 20 FEB 2025 to 20 MAR 2025

NE-3, 20 FEB 2025 to 20 MAR 2025