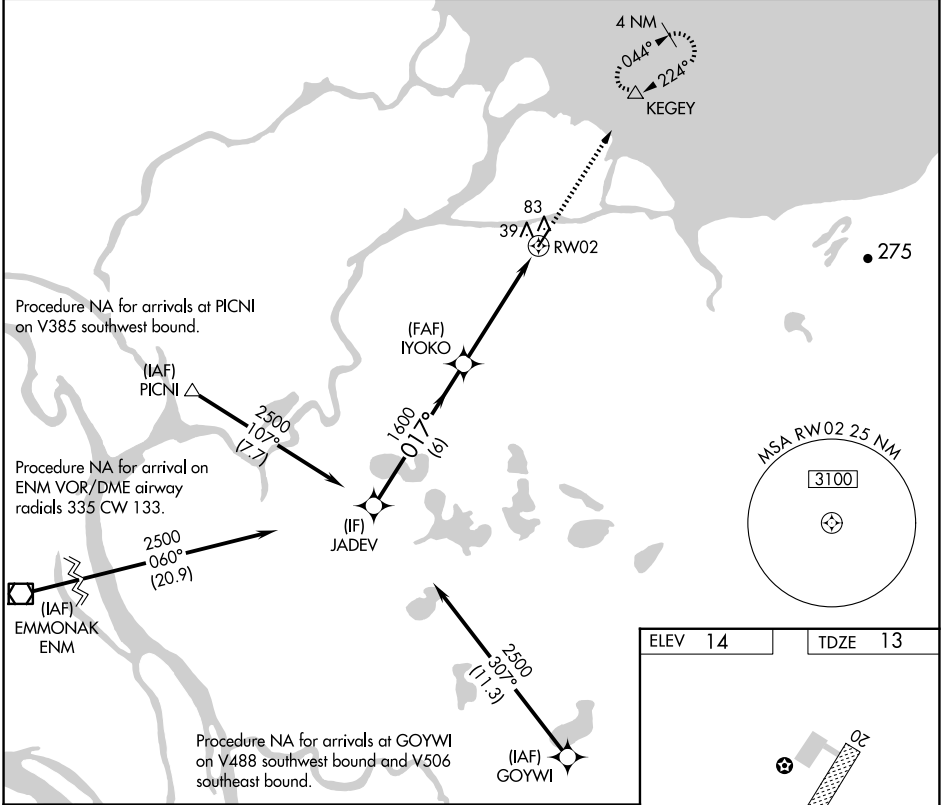


# RNAV (GPS) RWY 2

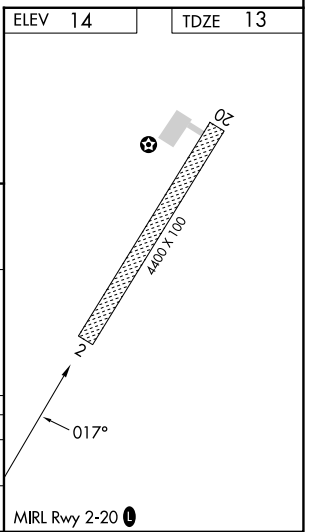
KOTLIK (2A9) (PFKO)

APP CRS	Rwy Idg	<b>4400</b>
<b>017°</b>	TDZE	<b>13</b>
	Apt Elev	<b>14</b>

RNP APCH.		MISSED APPROACH: Climb to 3500 direct KEGEY and hold.	
<p>▼ Circling Rwy 20 NA at night.</p> <p>▲ NA Rwy 2 helicopter visibility reduction below 3/4 SM NA.</p>			
AWOS-3P	ENM/PAEM AWOS-3P	ANCHORAGE CENTER	CTAF
<b>118.1</b>	<b>135.35</b>	<b>124.0</b>	<b>122.90</b>



JADEV	IYOKO		3500	KEGEY
2500	1600		↑	△
017°		2.91°		
		TCH 40		
6 NM		5 NM		
CATEGORY	A	B	C	D
RNAV MDA	500-1	487 (500-1)	NA	
CIRCLING	560-1	546 (600-1)	NA	



AK, 20 FEB 2025 to 17 APR 2025

AK, 20 FEB 2025 to 17 APR 2025