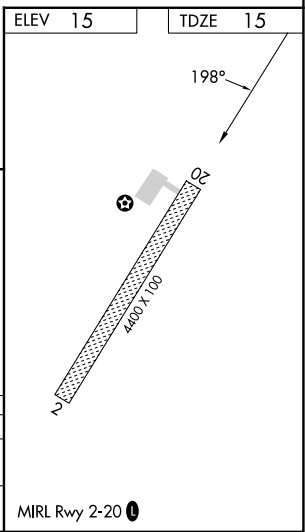
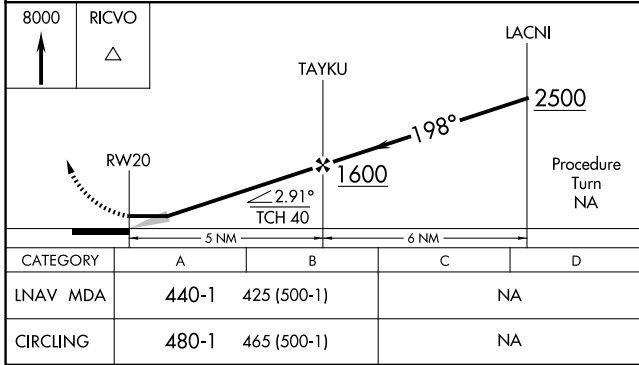
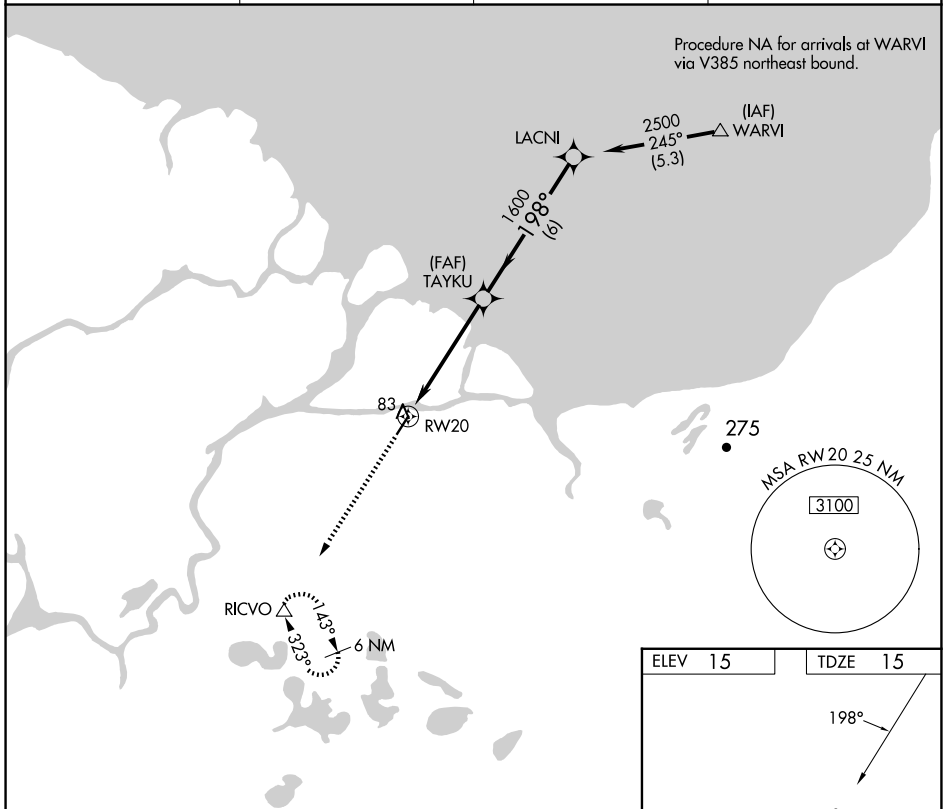


APP CRS <b>198°</b>	Rwy Idg TDZE Apt Elev	<b>4400</b> <b>15</b> <b>15</b>
------------------------	-----------------------------	---------------------------------------

# RNAV (GPS) RWY 20

KOTLIK (2A9) (PFKO)

RNP APCH - GPS.		MISSED APPROACH: Climb to 8000 direct RICVO WP and hold.	
<p>▼ When local altimeter not received use Emmonak altimeter setting. Procedure NA at night.</p> <p>▲ NA</p>		AWOS-3P <b>118.1</b>	ENM/PAEM AWOS-3P <b>135.35</b>
		ANCHORAGE CENTER <b>124.0</b>	CTAF <b>122.90</b>



AK, 20 FEB 2025 to 17 APR 2025

AK, 20 FEB 2025 to 17 APR 2025