

| | | |
|--|------------------------|---|
| WAAS CH 40209 W34A | APP CRS 342° | Rwy ldg 3248 TDZE 17 Apt Elev 17 |
|--|------------------------|---|

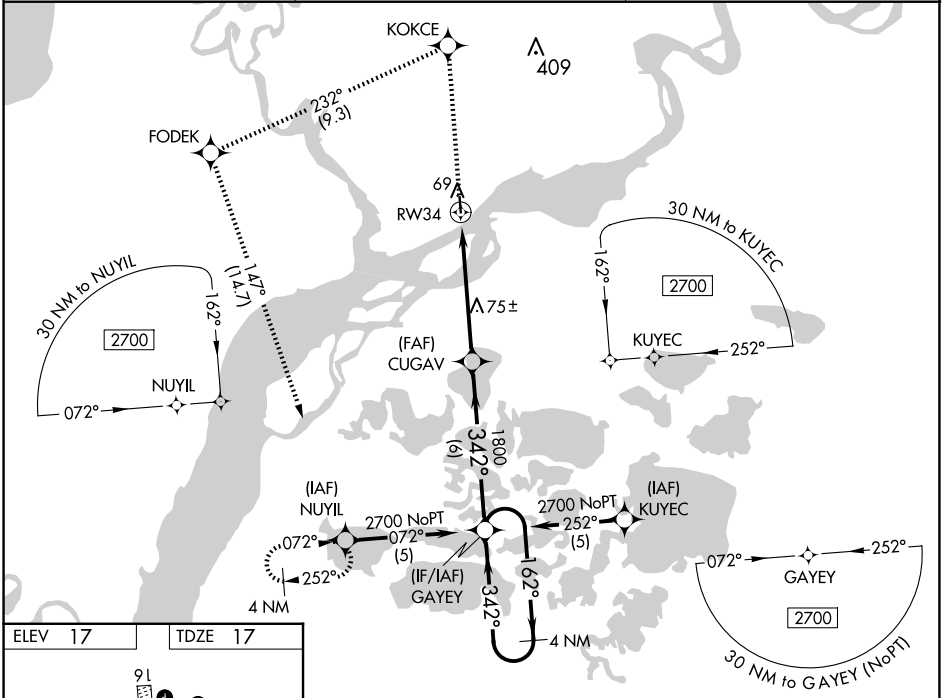
RNAV (GPS) RWY 34

NAPAKIAK (WNA) (PANA)

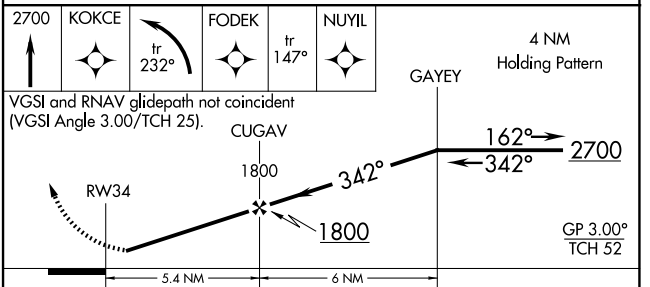
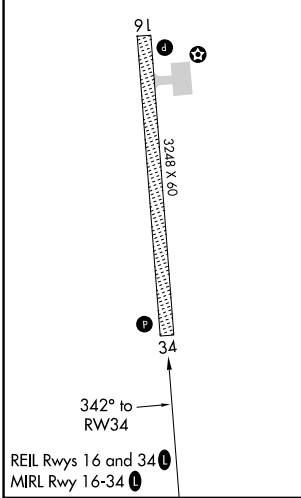
V DME/DME RNP-0.3 NA. When local altimeter setting not received, use Bethel altimeter setting. Procedure NA at night for Cat C and D aircraft. Rwy 34 helicopter visibility reduction 1 SM NA.

MISSED APPROACH: Climb to 2700 direct KOKCE and left turn on track 232° to FODEK on track 147° to NUYIL and hold.

| | | |
|---------------------------|--|----------------------|
| AWOS-3P 121.425 | ANCHORAGE CENTER 125.2 372.0 | CTAF 122.9 |
|---------------------------|--|----------------------|



| | |
|---------|---------|
| ELEV 17 | TDZE 17 |
|---------|---------|



| | | | | |
|----------|-------------------|-------------|---------------------|-------------------|
| CATEGORY | A | B | C | D |
| LPV DA | 298-1 281 (300-1) | | | |
| LNAV MDA | 360-1 343 (400-1) | | 360-1¼ 343 (400-1¼) | |
| CIRCLING | 500-1 | 483 (500-1) | 540-1½ 523 (600-1½) | 680-2 663 (700-2) |

AK, 20 FEB 2025 to 17 APR 2025

AK, 20 FEB 2025 to 17 APR 2025