

WAAS CH <b>61232</b> <b>W34A</b>	APP CRS <b>346°</b>	Rwy ldg <b>6400</b> TDZE <b>214</b> Apt Elev <b>220</b>
----------------------------------------	------------------------	---------------------------------------------------------------

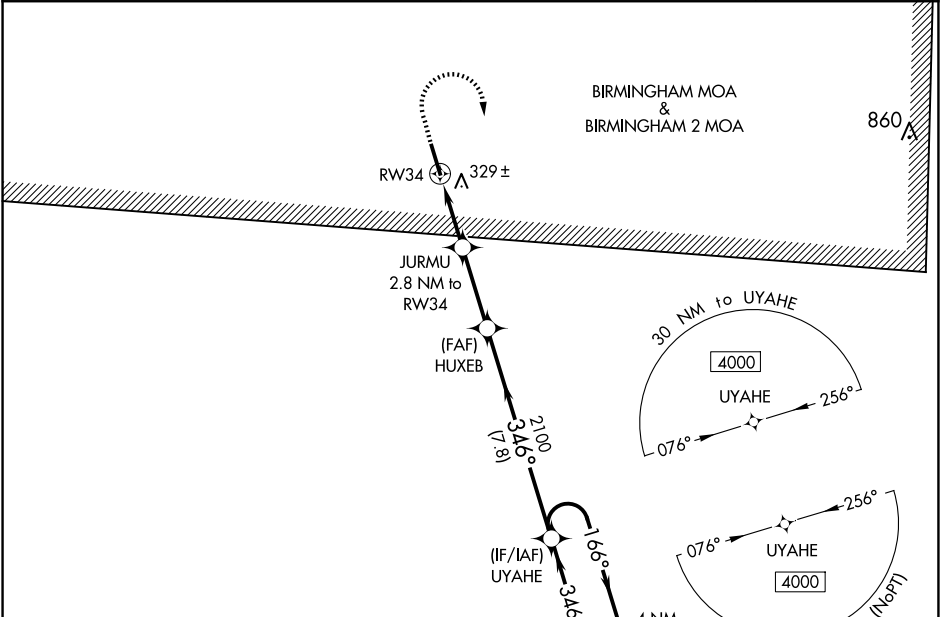
# RNAV (GPS) RWY 34

VAIDEN FLD (A08)

**⚠ NA** Baro-VNAV NA. DME/DME RNP-0.3 NA. Use Demopolis altimeter setting; when not received, use Tuscaloosa altimeter setting and increase all DA 27 feet, increase all MDA 40 feet, increase all LPV visibilities 1/8 mile, and increase Circling Cat D visibility 1/4 mile. Helicopter visibility reduction below 3/4 SM NA.

MISSED APPROACH: Climb to 700 then climbing right turn to 4000 direct UYAHE and hold, continue climb-in-hold to 4000.

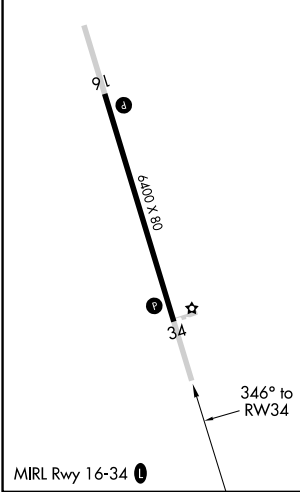
AWOS-3P <b>119.350</b>	DYA AWOS-3P <b>119.475</b>	ATLANTA CENTER <b>132.25 263.025</b>	CTAF <b>122.9 0</b>
---------------------------	-------------------------------	-----------------------------------------	------------------------



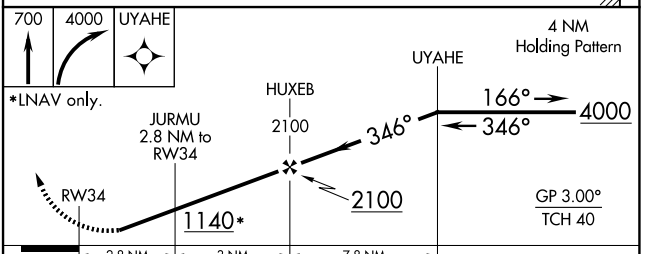
SE-4, 20 FEB 2025 to 20 MAR 2025

SE-4, 20 FEB 2025 to 20 MAR 2025

ELEV 220	TDZE 214
----------	----------



PINE HILL EAST MOA & CAMDEN RIDGE MOA



CATEGORY	A	B	C	D
LPV DA		546-1 1/8	332 (400-1 1/8)	
LNAV/VNAV DA		707-1 3/4	493 (500-1 3/4)	
LNAV MDA	660-1	446 (500-1)	660-1 3/8	446 (500-1 3/8)
CIRCLING	740-1	760-1	760-1 1/2	880-2
	520 (600-1)	540 (600-1)	540 (600-1 1/2)	660 (700-2)