

WAAS CH <b>97725</b> <b>W27A</b>	APP CRS <b>274°</b>	Rwy Idg TDZE Apt Elev	<b>3541</b> <b>288</b> <b>289</b>
--	------------------------	-----------------------------	---

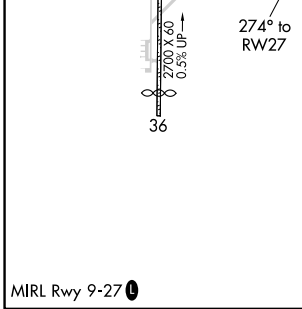
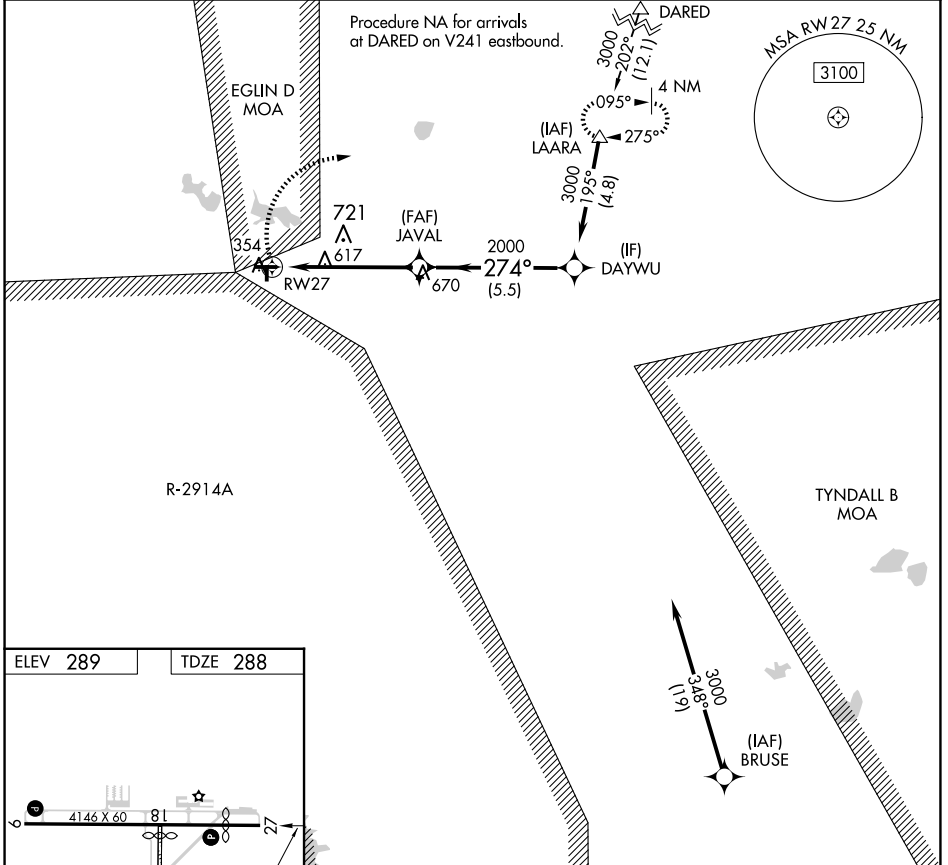
# RNAV (GPS) RWY 27

DEFUNIAK SPRINGS (54J)

RNP APCH.  
 ⚠ Circling NA to Rwy 18 and 36. Circling Rwy 9 NA at night.  
 ⚠ Rwy 27 helicopter visibility reduction below  $\frac{3}{4}$  SM NA.

MISSED APPROACH: Climbing right turn to 3000 direct LAARA and hold.

AWOS-3P <b>118.725</b>	EGLIN APP CON <b>124.05 284.65</b>	UNICOM <b>123.05 (CTAF) 0</b>
---------------------------	---------------------------------------	----------------------------------



ELEV 289	TDZE 288	Visual Segment - Obstacles.		DAYWU
3000	LAARA	1.7 NM to RWY 27	JAVAL	3000
	△		2000	
		1.7 NM	3.6 NM	5.5 NM
CATEGORY	A	B	C	D
LP MDA	880-1	592 (600-1)		NA
LNAV MDA	880-1	592 (600-1)		NA
Ⓢ CIRCLING	880-1	920-1		NA
	591 (600-1)	631 (700-1)		

SE-3, 20 FEB 2025 to 20 MAR 2025

SE-3, 20 FEB 2025 to 20 MAR 2025