

APP CRS	Rwy Idg	<b>4498</b>
<b>065°</b>	TDZE	<b>2240</b>
	Apt Elev	<b>2241</b>

# RNAV (GPS) RWY 7

JOHNSON COUNTY (6A4)

RNP APCH - GPS

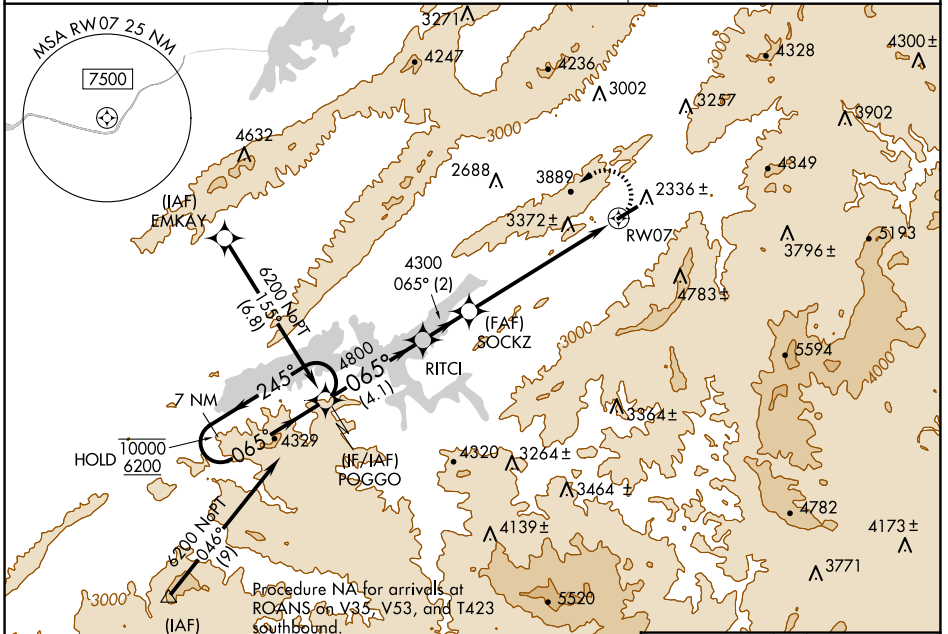
**NA**  
 -10°C  
 Rwy 7 helicopter visibility reduction below 1 SM NA. Circling NA for Cat C south of Rwy 7-25. When local altimeter setting not received, use Abingdon altimeter setting and increase all MDAs 80 feet. Circling NA for Cats B and C when using Abingdon altimeter setting. Procedure NA at night.

**MISSED APPROACH:**  
 Climbing left turn to 6200 direct POGGO and hold.

AWOS-3  
**126.225**

TRI-CITY APP CON ★  
**134.425 349.0**

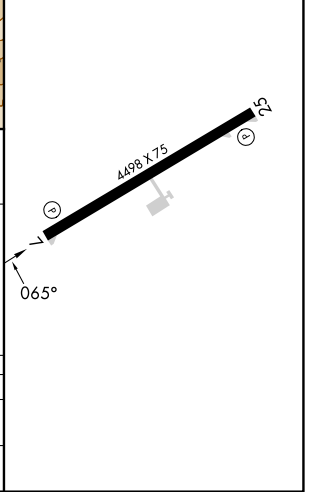
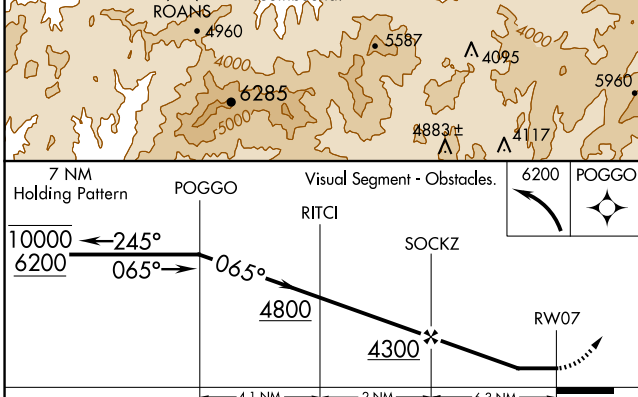
UNICOM  
**122.7 (CTAF)**



SE-1, 20 FEB 2025 to 20 MAR 2025

SE-1, 20 FEB 2025 to 20 MAR 2025

ELEV 2241	TDZE 2240
-----------	-----------



CATEGORY	A	B	C	D
LNVA MDA	4040-1¼ 1800 (1800-1¼)	4040-1½ 1800 (1800-1½)	4040-3 1800 (1800-3)	
CIRCLING	4040-1¼ 1799 (1800-1¼)	4260-1½ 2019 (2100-1½)	4260-3 2019 (2100-3)	NA