

APP CRS	Rwy Idg	4904
064°	TDZE	1575
	Apt Elev	1593

RNAV (GPS) RWY 6

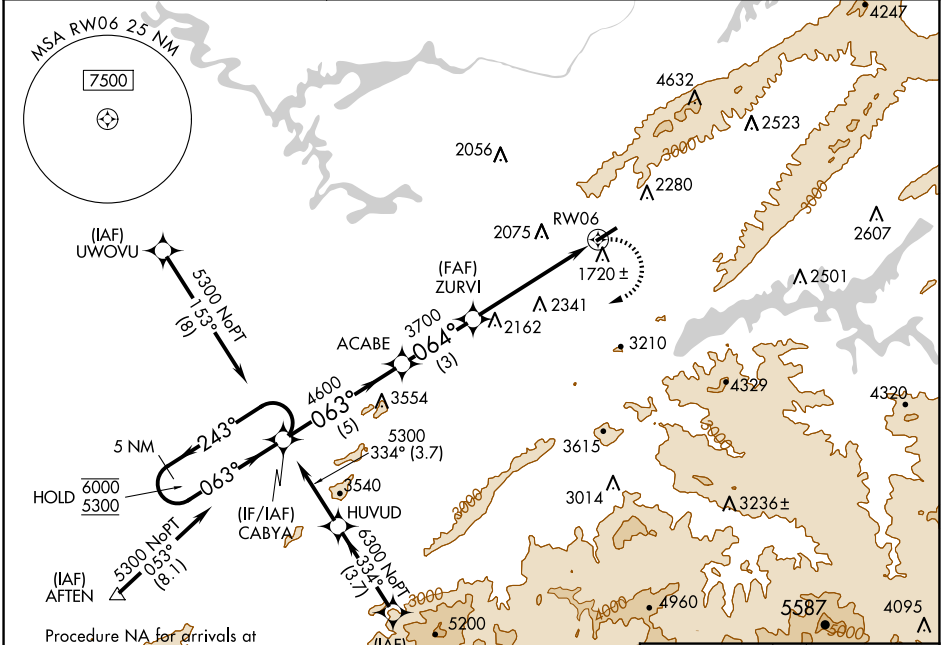
ELIZABETHTON MUNI (ØA.9)

RNP APCH - GPS.

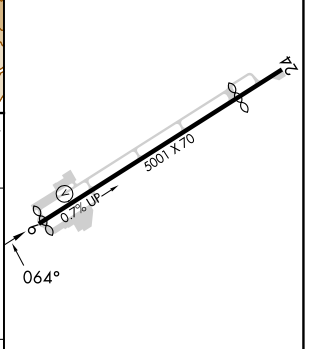
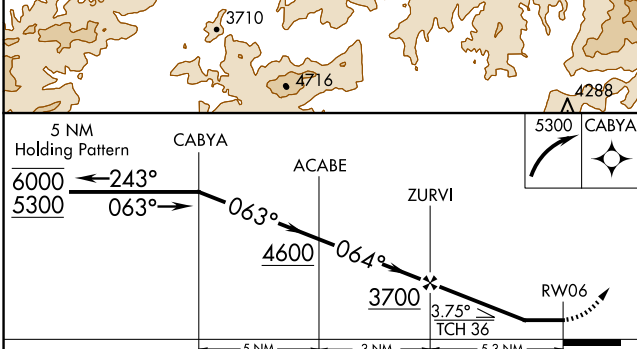
⚠ Circling NA northwest of Rwy 6-24. Procedure NA at night.
⚠ Rwy 6 helicopter visibility reduction below 1 SM NA.
⚠ -13°C

MISSED APPROACH: (Do not exceed 200K until CABYA)
 Climbing right turn to 5300
 direct CABYA and hold.

AWOS-3PT 135.675	TRI CITY APP CON ★ 134.425 349.0	UNICOM 123.0 (CTAF) 0
----------------------------	--	---------------------------------



ELEV 1593 **D** TDZE 1575



CATEGORY	A	B	C	D
LNVA MDA	3080-1¼ 1505 (1500-1¼)	3160-1½ 1585 (1600-1½)	3260-3 1685 (1700-3)	NA
C CIRCLING	3080-1¼ 1487 (1500-1¼)	3160-1½ 1567 (1600-1½)	3260-3 1667 (1700-3)	NA

REIL Rwy 6 **0**
 LIRL Rwy 6-24 **0**

SE-1, 20 FEB 2025 to 20 MAR 2025

SE-1, 20 FEB 2025 to 20 MAR 2025