

LOUISVILLE, GEORGIA

AL-9837 (FAA)

24193

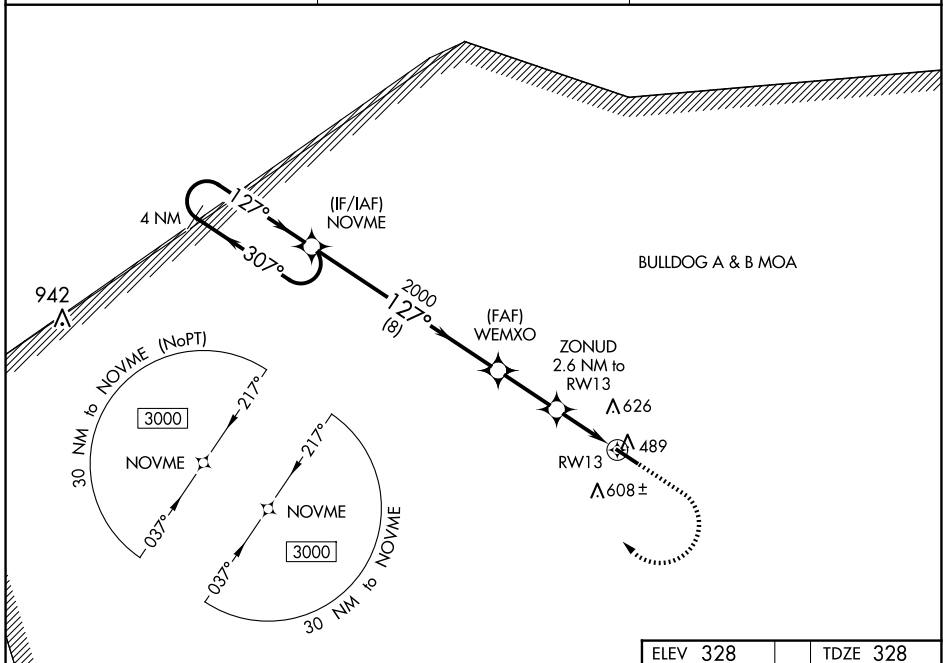
WAAS CH <b>56539</b> <b>W13A</b>	APP CRS <b>127°</b>	Rwy Idg TDZE Apt Elev	<b>5002</b> <b>328</b> <b>328</b>
--	------------------------	-----------------------------	---

# RNAV (GPS) RWY 13

LOUISVILLE MUNI (2J3)

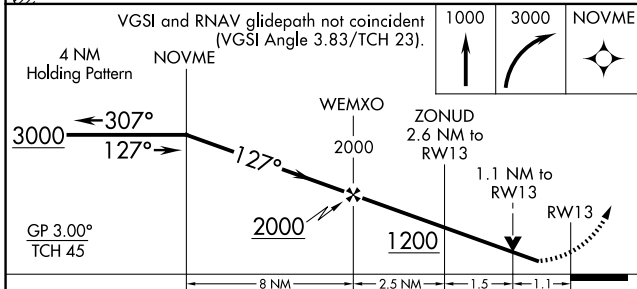
RNP APCH GPS.	MISSED APPROACH: Climb to 1000 then climbing right turn to 3000 direct NOVME and hold.
For uncompensated Baro-VNAV systems, LNAV/VNAV NA below -15°C or above 54°C. Rwy 13 helicopter visibility reduction below 3/4 SM NA.	

AWOS-3PT <b>119.35</b>	AUGUSTA APP CON <b>126.8 270.3</b>	CTAF <b>122.9</b>
---------------------------	---------------------------------------	----------------------



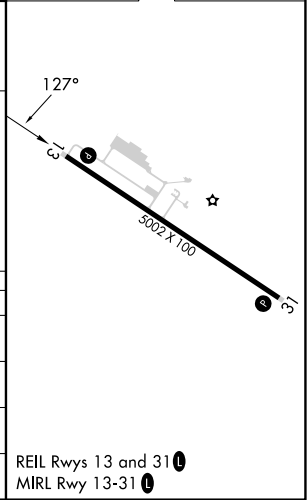
SE-4, 20 FEB 2025 to 20 MAR 2025

SE-4, 20 FEB 2025 to 20 MAR 2025



ELEV 328	TDZE 328
----------	----------

CATEGORY	A	B	C	D
LPV DA	578-1 250 (300-1)			
LNAV/ VNAV DA	768-1½ 440 (500-1½)			
LNAV MDA	800-1	472 (500-1)	800-1½ 472 (500-1½)	800-1¾ 472 (500-1¾)
CIRCLING	840-1 512 (600-1)	980-1 652 (700-1)	980-1¾ 652 (700-1¾)	980-2 652 (700-2)



LOUISVILLE, GEORGIA  
Orig-B 10AUG23

32°59'N-82°23'W

LOUISVILLE MUNI (2J3)

# RNAV (GPS) RWY 13