

LOUISVILLE, GEORGIA

AL-9837 (FAA)

24193

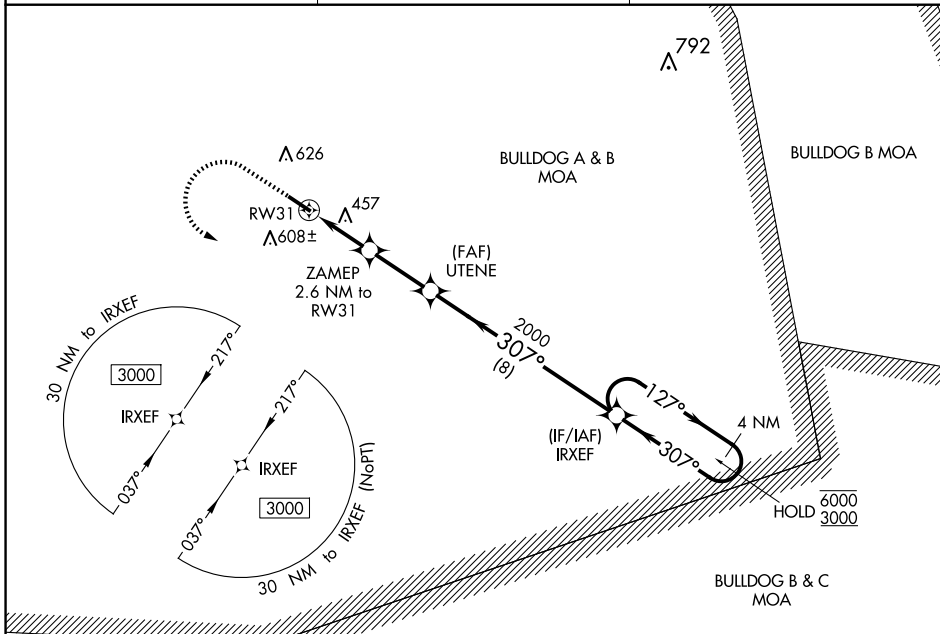
WAAS CH <b>90439</b> <b>W31A</b>	APP CRS <b>307°</b>	Rwy Idg TDZE Apt Elev	<b>5002</b> <b>319</b> <b>328</b>
--	------------------------	-----------------------------	---

# RNAV (GPS) RWY 31

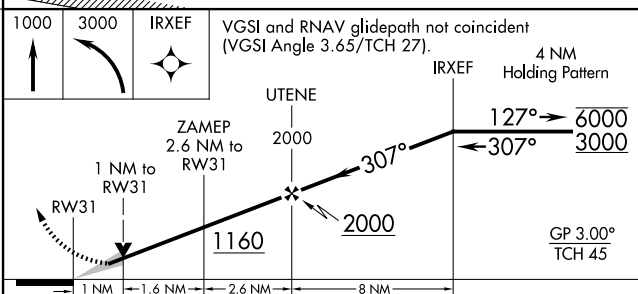
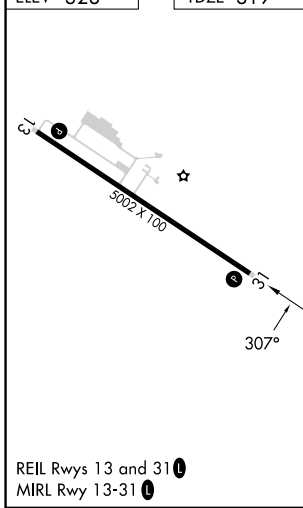
LOUISVILLE MUNI (2J3)

RNP APCH - GPS	MISSED APPROACH: Climb to 1000 then climbing left turn to 3000 direct IRXEF and hold.
----------------	---

AWOS-3PT <b>119.35</b>	AUGUSTA APP CON <b>126.8 270.3</b>	CTAF <b>122.9</b>
---------------------------	---------------------------------------	----------------------



ELEV 328	TDZE 319
----------	----------



1000	3000	IRXEF	VGSI and RNAV glidepath not coincident (VGSI Angle 3.65/TCH 27).			
↑		↩	✦	4 NM Holding Pattern		
RW31		ZAMEP 2.6 NM to RW31	UTENE 2000	IRXEF 3000		
1 NM		1.6 NM	2.6 NM	8 NM		
CATEGORY	A	B	C	D		
LPV DA	569-1		250 (300-1)			
LNAV/VNAV DA	720-1½		401 (400-1½)			
LNAV MDA	720-1	401 (400-1)	720-1½	401 (400-1½)		
CIRCLING	840-1 512 (600-1)	980-1 652 (700-1)	980-1¾ 652 (700-1¾)	980-2 652 (700-2)		

REIL Rwy 13 and 31  
MIRL Rwy 13-31

LOUISVILLE, GEORGIA  
Orig-A 11AUG22

32°59'N-82°23'W

# RNAV (GPS) RWY 31

LOUISVILLE MUNI (2J3)

SE-4, 20 FEB 2025 to 20 MAR 2025

SE-4, 20 FEB 2025 to 20 MAR 2025