

WAAS CH 40131 W05A	APP CRS 050°	Rwy Idg TDZE 584 Apt Elev 584	4099
--	------------------------	---	-------------

RNAV (GPS) RWY 5

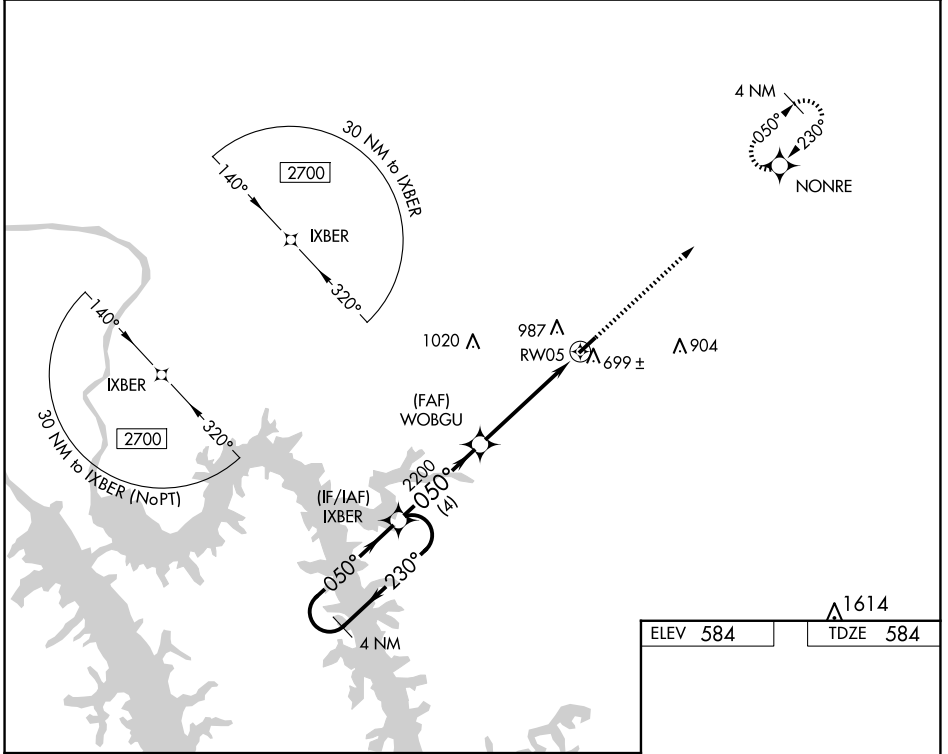
PRINCETON-CALDWELL COUNTY (2M \emptyset)

Baro-VNAV NA. Use Campbell AAF (Fort Campbell) altimeter setting; when not received, use Madisonville Rgnl altimeter setting and increase all DA 6 feet and all MDA 20 feet.
NA Increase LPV all Cats visibility 1/8 mile. DME/DME RNP-0.3 NA. Helicopter visibility reduction below 3/4 SM NA.

MISSED APPROACH:
Climb to 2700 direct NONRE and hold.

CAMPBELL APP CON
118.1 269.525

UNICOM
122.8 (CTAF) 0



SE-1, 20 FEB 2025 to 20 MAR 2025

SE-1, 20 FEB 2025 to 20 MAR 2025

