

APP CRS	Rwy ldg	5005
168°	TDZE	389
	Apt Elev	389

RNAV (GPS) RWY 17

TURNER COUNTY (75J)

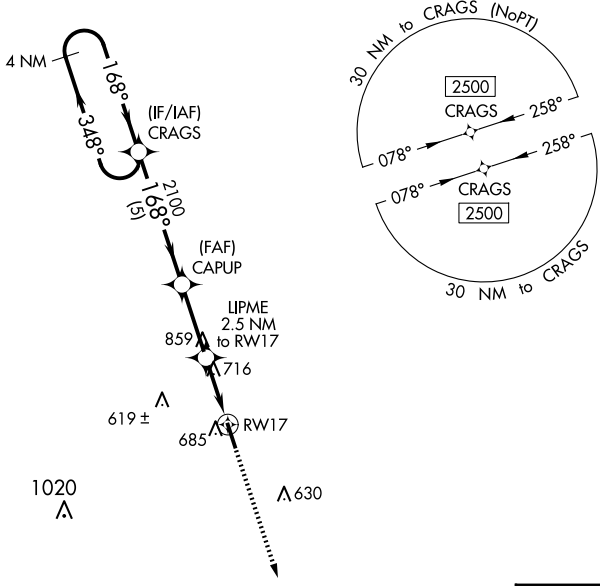
▽ Rwy 17 helicopter visibility reduction below 1 SM NA.
▲ NA DME/DME RNP-0.3 NA.
 When Fitzgerald altimeter setting not received, procedure NA.
 Procedure NA at night.

MISSED APPROACH: Climb to 2500
 direct SEISE and hold.

FZW AWOS-3
118.625

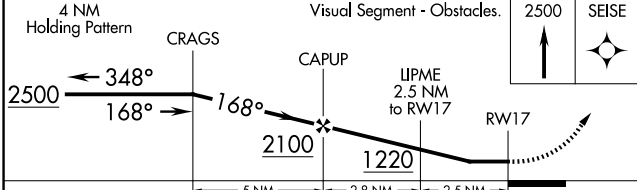
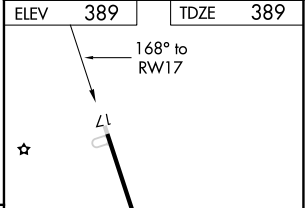
JACKSONVILLE CENTER
125.75 363.075

UNICOM
122.7 (CTAF)



SE-4, 20 FEB 2025 to 20 MAR 2025

SE-4, 20 FEB 2025 to 20 MAR 2025



CATEGORY	A	B	C	D
LNVA MDA	1080-1	691 (700-1)	1080-2	691 (700-2)
C CIRCLING	1100-1	711 (800-1)	1140-2 ³ / ₄ 751 (800-2 ¹ / ₄)	1260-2 ³ / ₄ 871 (900-2 ³ / ₄)

