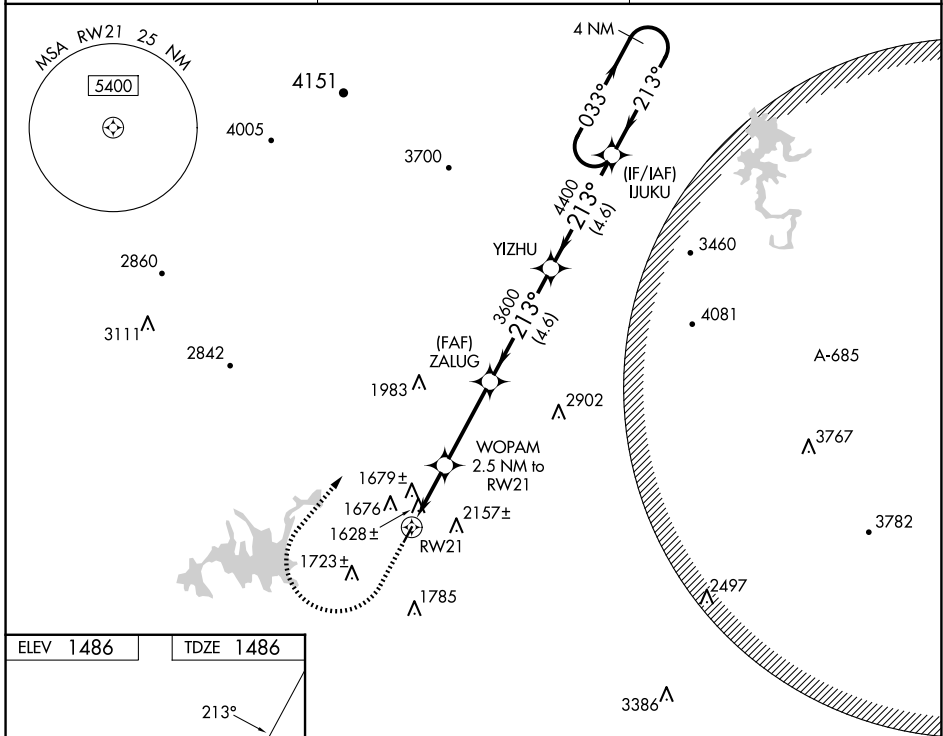


WAAS CH 86641 W21A	APP CRS 213°	Rwy Idg TDZE 1486 Apt Elev 1486	3507
--	------------------------	---	-------------

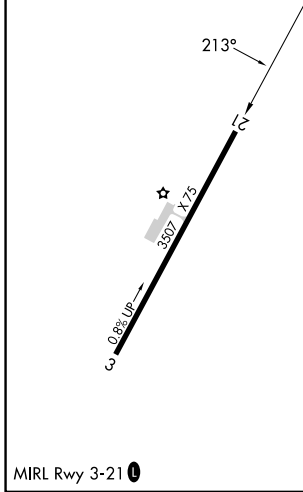
RNAV (GPS) RWY 21

GILMER COUNTY (49A)

RNP APCH.		MISSED APPROACH: Climb to 2500 then climbing right turn to 5600 direct IJUKU and hold, continue climb-in-hold to 5600.
	Rwy 21 helicopter visibility reduction below 1 SM NA. Procedure NA at night.	
AWOS-3 118.075	ATLANTA CENTER 133.1 342.425	UNICOM 123.0 (CTAF)



ELEV 1486	TDZE 1486
------------------	------------------



2500	5600	IJUKU	IJUKU	4 NM Holding Pattern
↑	↷	✧		
WOPAM 2.5 NM to RW21		ZALUG	YIZHU	IJUKU
RW21	2400	3600	4400	5600
	3.30° TCH 45			
	2.5 NM	3.4 NM	4.6 NM	4.6 NM
CATEGORY	A	B	C	D
LP MDA	1880-1	394 (400-1)	1880-1½	394 (400-1½)
LNAV MDA	1940-1	454 (500-1)	1940-1¾	454 (500-1¾)
CIRCLING	1980-1 494 (500-1)	2560-1½ 1074 (1100-1½)	2560-3	1074 (1100-3)

SE-4, 20 FEB 2025 to 20 MAR 2025

SE-4, 20 FEB 2025 to 20 MAR 2025