

WAAS CH <b>45941</b> <b>W03A</b>	APP CRS <b>033°</b>	Rwy Idg TDZE <b>1481</b> Apt Elev <b>1486</b>
--	------------------------	---

# RNAV (GPS) RWY 3

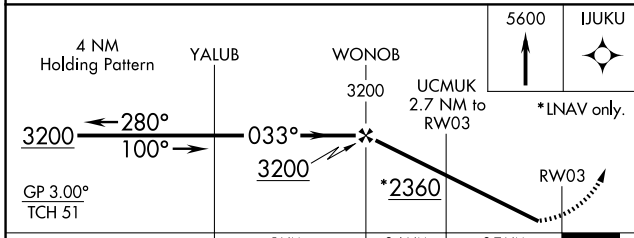
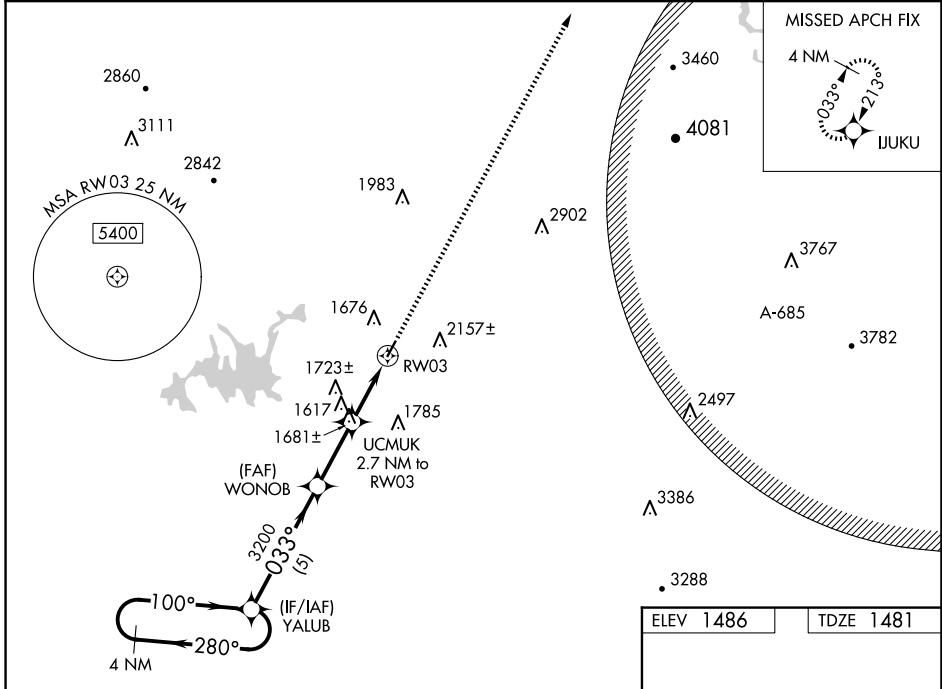
GILMER COUNTY (49A)

RNP APCH.

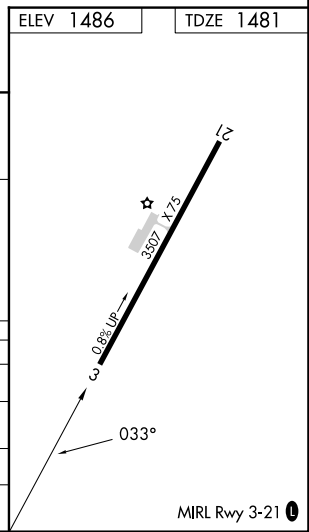
**⚠** For uncompensated Baro-VNAV systems, LNAV/VNAV NA below -17°C (2°F) or above 54°C (130°F). Rwy 3 helicopter visibility reduction below 1 SM NA. Procedure NA at night.

MISSED APPROACH:  
Climb to 5600 direct IJUKU and hold, continue climb-in-hold to 5600.

AWOS-3 <b>118.075</b>	ATLANTA CENTER <b>133.1 342.425</b>	UNICOM <b>123.0 (CTAF)</b>
--------------------------	--	-------------------------------



CATEGORY	A	B	C	D
LPV DA		1731-1	250 (300-1)	
LNAV/VNAV DA		1790-1	309 (400-1)	
LNAV MDA	1880-1	399 (400-1)	1880-1 $\frac{1}{8}$	399 (400-1 $\frac{1}{8}$ )
<b>C</b> CIRCLING	1980-1 494 (500-1)	2560-1 $\frac{1}{2}$ 1074 (1100-1 $\frac{1}{2}$ )	2560-3	1074 (1100-3)



SE-4, 20 FEB 2025 to 20 MAR 2025

SE-4, 20 FEB 2025 to 20 MAR 2025