

RNAV (GPS) RWY 8

BLAIRSVILLE (DZJ)

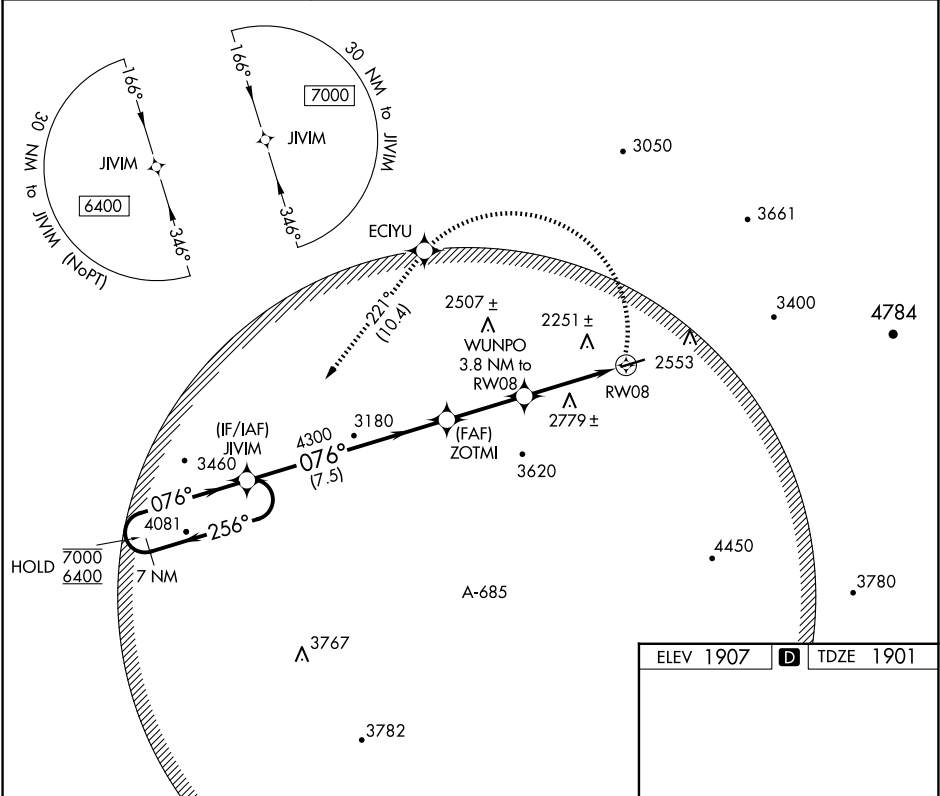
APP CRS	Rwy Idg	4017
076°	TDZE	1901
	Apt Elev	1907

RNP APCH - GPS

Procedure NA at night. Rwy 8 helicopter visibility reduction below 1 SM NA. When local altimeter setting not received, procedure NA. Circling NA for Cat D.

MISSED APPROACH: (Do not exceed 210K until JIVIM) Climbing left turn to 6400 direct ECIYU and on track 221° to JIVIM and hold, continue climb-in-hold to 6400.

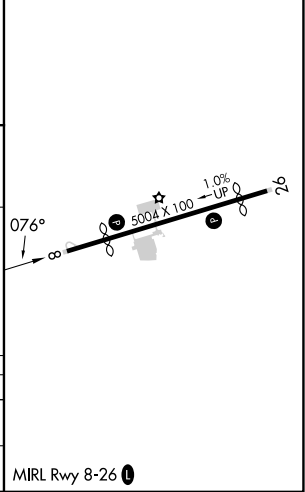
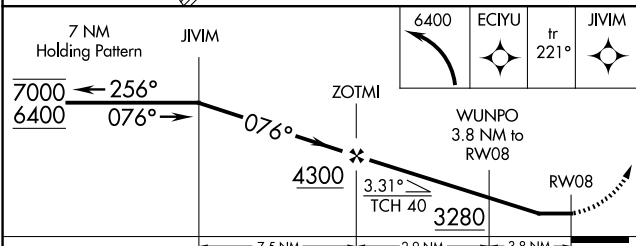
AWOS-3PT 119.325	ATLANTA CENTER 134.8 379.95	UNICOM 122.8 (CTAF)
----------------------------	---------------------------------------	-------------------------------



SE-4, 20 FEB 2025 to 20 MAR 2025

SE-4, 20 FEB 2025 to 20 MAR 2025

ELEV 1907	D TDZE 1901
-----------	--------------------



CATEGORY	A	B	C	D
LNVA MDA	2860-1¼ 959 (1000-1¼)	2860-1½ 959 (1000-1½)	2860-3	959 (1000-3)
C CIRCLING	2860-1¼ 953 (1000-1¼)	2940-1½ 1033 (1100-1½)	3180-3 1273 (1300-3)	NA

MIRL Rwy 8-26 **D**