

WAAS CH 99641 W34A	APP CRS 335°	Rwy Idg 3300 TDZE 386 Apt Elev 386
---------------------------------	------------------------	---

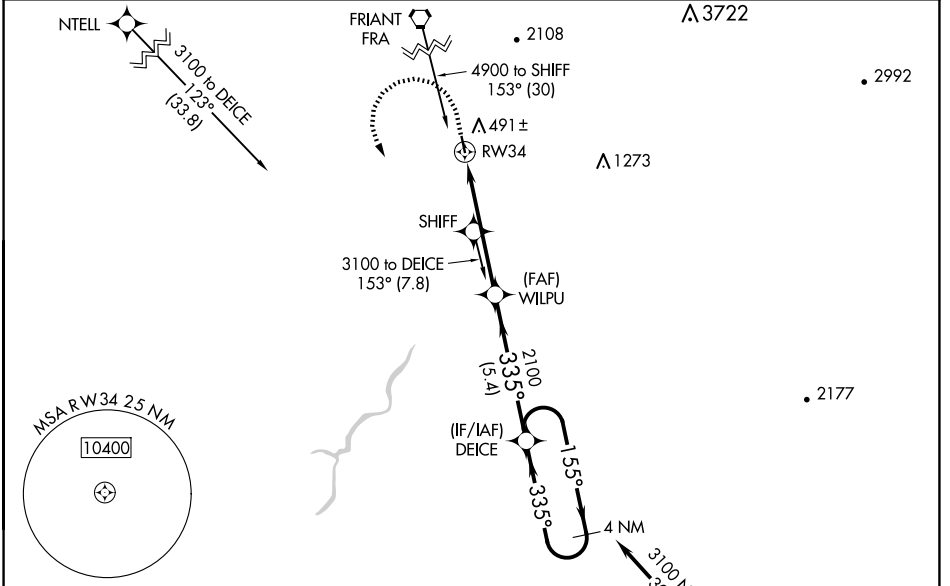
RNAV (GPS) RWY 34

REEDLEY MUNI (O32)

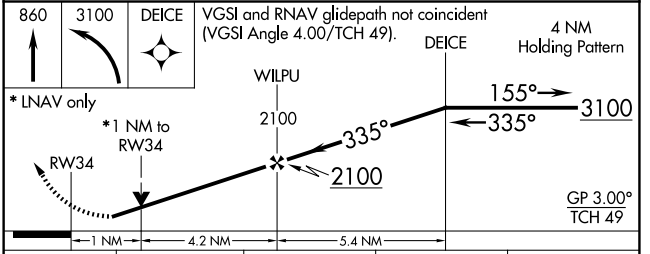
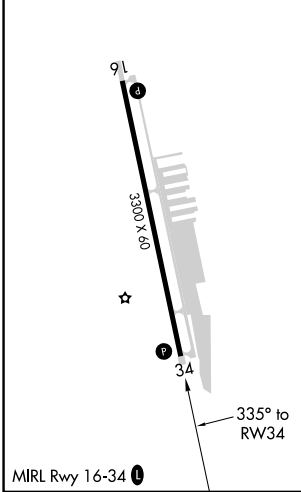
NA For uncompensated Baro-VNAV systems, LNAV/VNAV NA below -15°C (5°F) or above 54°C (130°F). Circling NA east of Rwy 16-34. Baro-VNAV and VDP NA when using Fresno Yosemite Intl altimeter setting. Rwy 34 helicopter visibility reduction below ¾ SM NA. DME/DME RNP-0.3 NA. When local altimeter setting not received, use Fresno Yosemite Intl altimeter setting: increase all DAs 41 feet and all visibilities ⅓ SM; increase all MDAs 60 feet.

MISSED APPROACH: Climb to 860 then climbing left turn to 3100 direct DEICE and hold, continue climb-in-hold to 3100.

AWOS-3PT 120.175	FRESNO APP CON 132.35 323.25	UNICOM 122.7 (CTAF)
----------------------------	--	-------------------------------



ELEV 386	TDZE 386
----------	----------



CATEGORY	A	B	C	D
LPV DA	636-¾	250 (300-¾)		NA
LNAV/VNAV DA	740-1	354 (400-1)		NA
LNAV MDA	860-1	474 (500-1)		NA
C CIRCLING	860-1	474 (500-1)		NA

SW-2, 20 FEB 2025 to 20 MAR 2025

SW-2, 20 FEB 2025 to 20 MAR 2025