

APP CRS	Rwy Idg	<b>4002</b>
<b>008°</b>	TDZE	<b>2316</b>
	Apt Elev	<b>2337</b>

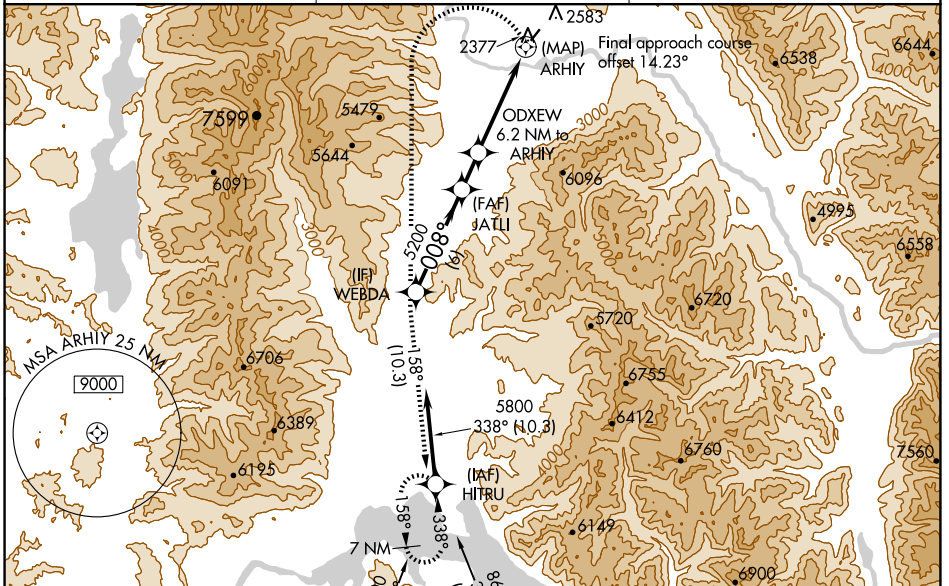
# RNAV (GPS) RWY 2

BOUNDARY COUNTY (65S)

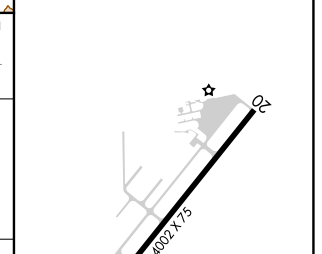
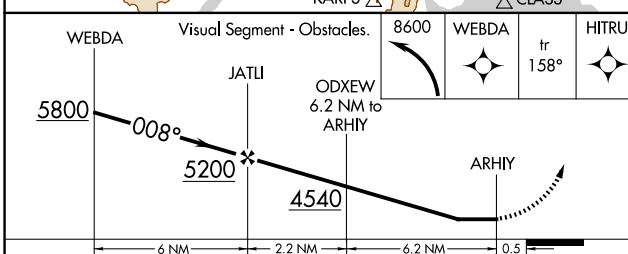
When local altimeter setting not received, procedure NA.  
 ▲ NA DME/DME RNP-0.3 NA.  
 ✖ -7°C Helicopter visibility reduction below ¾ SM NA.  
 \* Missed approach requires minimum climb of 400 feet per NM to 6600.  
 # Missed approach requires minimum climb of 300 feet per NM to 6400.

MISSED APPROACH: Climbing left turn to 8600 direct WEBDA and on track 158° to HITRU, continue climb-in-hold to 8600.

AWOS-3PT <b>132.575</b>	SEATTLE CENTER <b>123.95 290.55</b>	UNICOM <b>123.0 (CTAF) 0</b>
----------------------------	--	---------------------------------



ELEV 2337	TDZE 2316
-----------	-----------



CATEGORY	A	B	C	D
LNAV MDA*	3260-1¼	944 (1000-1¼)	3260-2¾ 944 (1000-2¾)	NA
LNAV MDA#	3880-1¼ 1564 (1600-1¼)	3880-1½ 1564 (1600-1½)	3880-3 1564 (1600-3)	NA
LNAV MDA	4480-1¼ 2164 (2200-1¼)	4480-1½ 2164 (2200-1½)	4480-3 2164 (2200-3)	NA
CIRCLING	4480-1¼ 2143 (2200-1¼)	4480-1½ 2143 (2200-1½)	4480-3 2143 (2200-3)	NA

MIRL Rwy 2-20 0

NW-1, 20 FEB 2025 to 20 MAR 2025

NW-1, 20 FEB 2025 to 20 MAR 2025