

APP CRS	Rwy Idg	<b>3299</b>
<b>083°</b>	TDZE	<b>964</b>
	Apt Elev	<b>967</b>

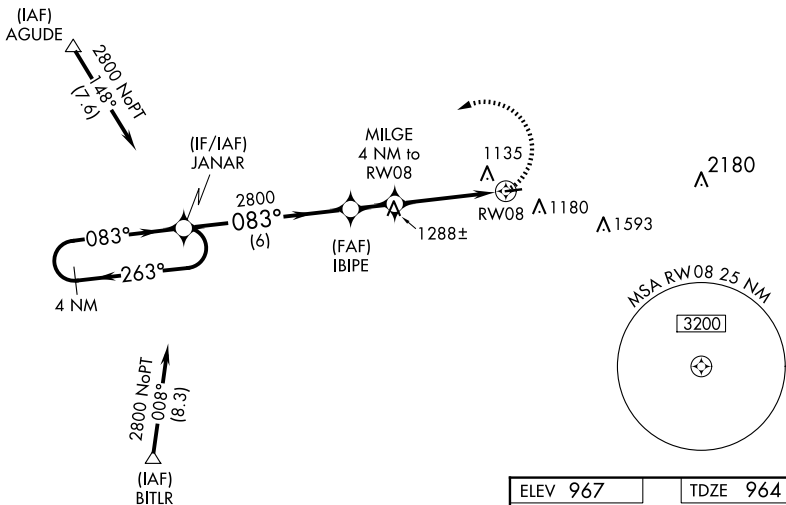
# RNAV (GPS) RWY 8

BOYCEVILLE MUNI (3T3)

RNP APCH.	MISSED APPROACH: Climbing left turn to 2800 direct JANAR and hold.
Use New Richmond Rgnl altimeter setting. When VGSI inop, procedure NA at night. Helicopter visibility reduction below 1 SM NA.	

RNH AWOS-3 <b>120.0</b>	MINNEAPOLIS CENTER <b>125.3 335.6</b>	UNICOM <b>122.8 (CTAF) 0</b>
----------------------------	--	---------------------------------

Procedure NA for arrivals at AGUDE via V78 westbound.



ELEV 967	TDZE 964
----------	----------

VGSI and descent angles not coincident (VGSI Angle 4.00/TCH 34).

4 NM Holding Pattern	JANAR	IBIPE	MILGE 4 NM to RWY 08	RWY 08
2800 ← 263°	2800	2800	2280	
083° →				
6 NM		1.6 NM	4 NM	

CATEGORY	A	B	C	D
LNAV MDA	1580-1	616 (700-1)	1580-1¾ 616 (700-1¾)	NA

EC-3, 20 FEB 2025 to 20 MAR 2025

EC-3, 20 FEB 2025 to 20 MAR 2025