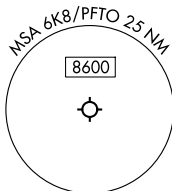
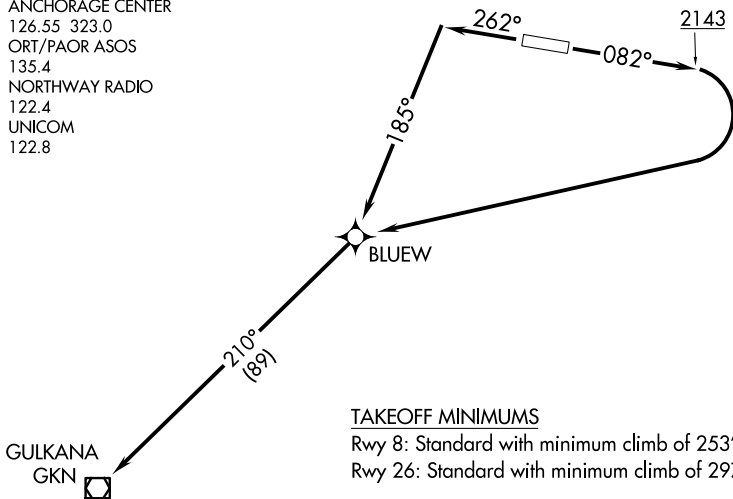


GULKANA ONE DEPARTURE (OBSTACLE) (RNAV)

ANCHORAGE CENTER
 126.55 323.0
 ORT/PAOR ASOS
 135.4
 NORTHWAY RADIO
 122.4
 UNICOM
 122.8

RNAV 1 - GPS.



TAKEOFF MINIMUMS

Rwy 8: Standard with minimum climb of 253'/NM to 8500.

Rwy 26: Standard with minimum climb of 297'/NM to 8500.

TAKEOFF OBSTACLE NOTES

Rwy 8: Building 1' from DER, 384' left of centerline, 11' AGL/1652' MSL. Vertical structure, vehicle on road beginning 14' from DER, 390' left of centerline, up to 17' AGL/1658' MSL. Tree 46' from DER, 321' left of centerline, 28' AGL/1668' MSL. Pole, trees, vegetation, vehicles on road, buildings, vertical structure beginning 48' from DER, 172' left of centerline, up to 41' AGL/1681' MSL. Trees beginning 65' from DER, 316' right of centerline, up to 56' AGL/1699' MSL. Trees beginning 201' from DER, 249' left of centerline, up to 44' AGL/1684' MSL. Trees beginning 487' from DER, 167' right of centerline, up to 56' AGL/1700' MSL. Trees beginning 774' from DER, 4' left of centerline, up to 45' AGL/1686' MSL.

Rwy 26: Buildings beginning 16' from DER, 328' right of centerline, up to 16' AGL/1658' MSL. Vertical structure, vegetation beginning 18' from DER, 193' right of centerline, up to 21' AGL/1663' MSL. Tree, buildings, pole, antenna beginning 29' from DER, 391' right of centerline, up to 61' AGL/1702' MSL. Tree 55' from DER, 504' left of centerline, 60' AGL/1705' MSL. Trees, vehicles on road beginning 58' from DER, 297' left of centerline, up to 62' AGL/1706' MSL. Tree, building beginning 134' from DER, 382' right of centerline, up to 62' AGL/1703' MSL. Trees, buildings, vertical structure, vehicles on road, poles beginning 148' from DER, 68' right of centerline, up to 64' AGL/1705' MSL. Trees beginning 937' from DER, 397' left of centerline, up to 62' AGL/1708' MSL. Trees beginning 1119' from DER, 230' left of centerline, up to 64' AGL/1709' MSL. Trees beginning 1523' from DER, 59' left of centerline, up to 72' AGL/1717' MSL. Trees beginning 2001' from DER, 25' right of centerline, up to 66' AGL/1707' MSL. Trees beginning 2043' from DER, 117' left of centerline, up to 75' AGL/1718' MSL. Trees beginning 2417' from DER, 2' right of centerline, up to 72' AGL/1711' MSL.

NOTE: Chart not to scale.

DEPARTURE ROUTE DESCRIPTION

TAKEOFF RUNWAY 8: Climb on heading 082° to 2143, then right turn direct BLUEW, Thence. . . .

TAKEOFF RUNWAY 26: Climb on heading 262° to intercept course 185° to BLUEW, Thence. . . .

. . . . thence on track 210° to GKN VOR/DME. Maintain ATC assigned altitude. Expect filed altitude 10 minutes after departure.