

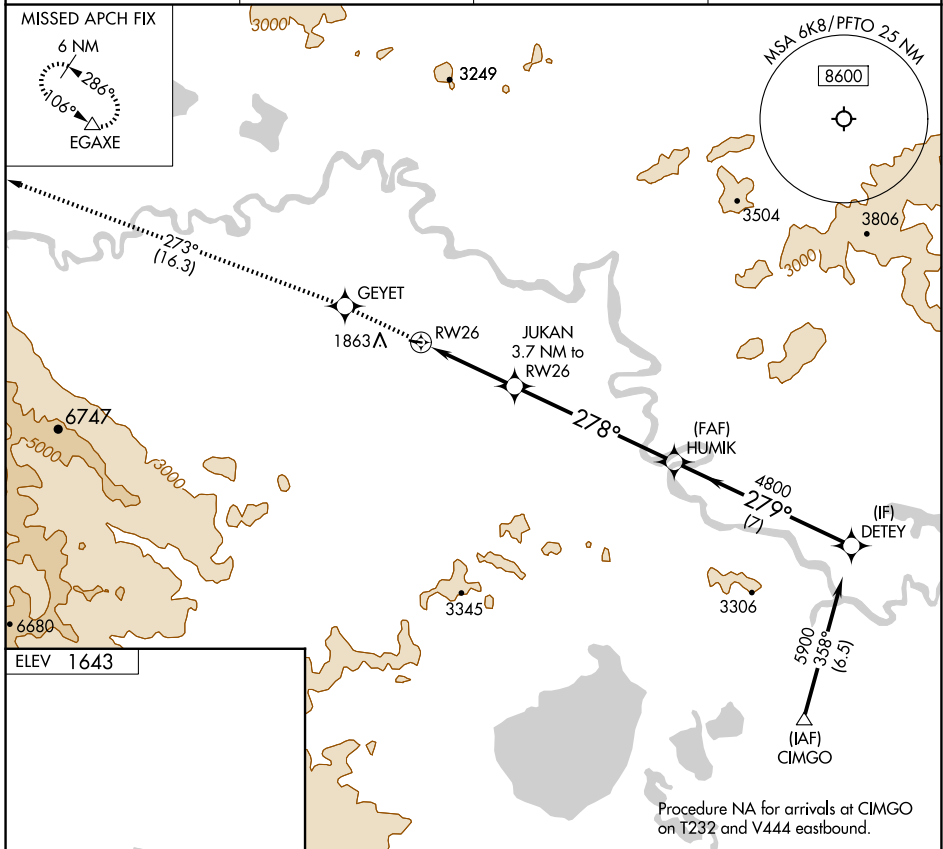
APP CRS <b>278°</b>	Rwy Idg TDZE Apt Elev	<b>N/A</b> <b>N/A</b> <b>1643</b>
------------------------	-----------------------------	---

# RNAV (GPS)-A

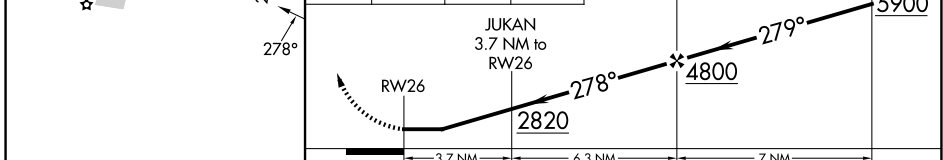
TOK JUNCTION (6K8) (PFTO)

RNP APCH - GPS.		MISSED APPROACH: Climb to 8000 direct GEYET and on track 273° to EGAXE and hold, do not exceed 230K when continuing climb-in-hold to 8000.	
-----------------	--	--	--

AWOS-3P <b>118.1</b>	ANCHORAGE CENTER <b>126.55 323.0</b>	NORTHWAY RADIO <b>122.4</b>	UNICOM <b>122.8 (CTAF)</b>
-------------------------	---	--------------------------------	-------------------------------



8000	GEYET	tr 273°	EGAXE	DETEY
------	-------	---------	-------	-------



CATEGORY	A	B	C	D
CIRCLING	2180-1	537 (600-1)	NA	

AK, 20 FEB 2025 to 17 APR 2025

AK, 20 FEB 2025 to 17 APR 2025