

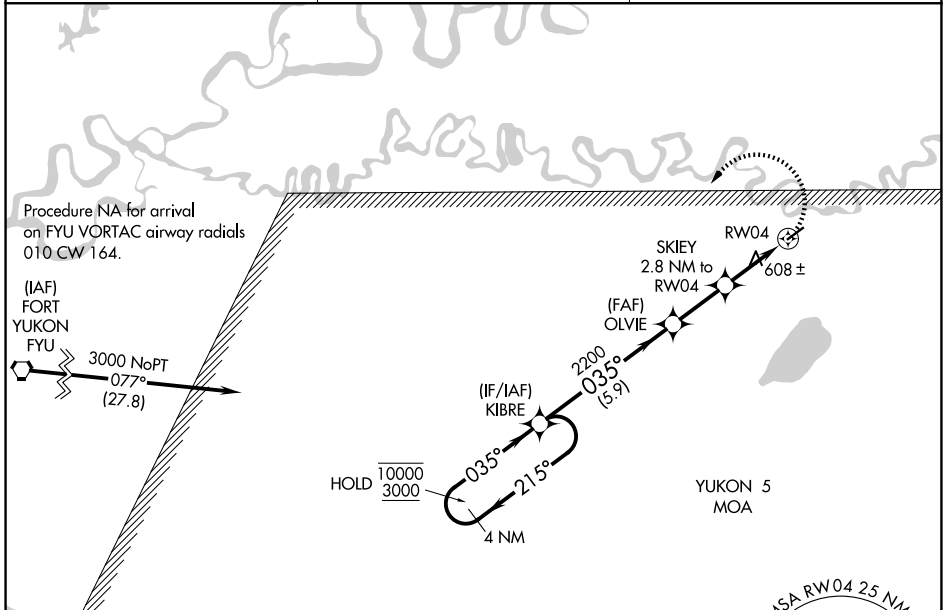
APP CRS 035°	Rwy Idg 4000
	TDZE 542
	Apt Elev 549

RNAV (GPS) RWY 4

CHALKYITSIK (CIK) (PACI)

RNP APCH.	<p>Procedure NA at night.</p> <p>NA Rwy 4 helicopter visibility reduction below 1 SM NA. Use Fort Yukon altimeter setting.</p>	MISSED APPROACH: Climbing left turn to 3000 direct KIBRE and hold.
-----------	--	--

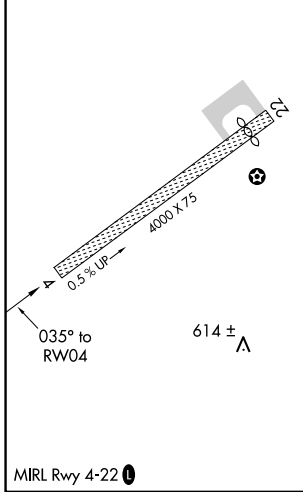
FYU/PFYU AWOS-3P 125.8	ANCHORAGE CENTER 135.0 225.4	CTAF 122.9
----------------------------------	--	----------------------



AK, 20 FEB 2025 to 17 APR 2025

AK, 20 FEB 2025 to 17 APR 2025

ELEV 549	TDZE 542
----------	----------



<p>4 NM Holding Pattern</p> <p>10000 ← 215°</p> <p>3000 → 035°</p>	<p>KIBRE</p>	<p>OLVIE</p>	<p>SKIEY 2.8 NM to RWY 4</p>	<p>3000</p>	<p>KIBRE</p>
				<p>2200</p>	<p>1460</p>
		<p>5.9 NM</p>	<p>2.3 NM</p>	<p>2.8 NM</p>	
CATEGORY	A	B	C	D	
LNAV MDA	960-1	418 (500-1)	960-1½	418 (500-1½)	
CIRCLING	1080-1 531 (600-1)	1160-1 611 (700-1)	1200-1¾ 651 (700-1¾)	1360-2¾ 811 (900-2¾)	