

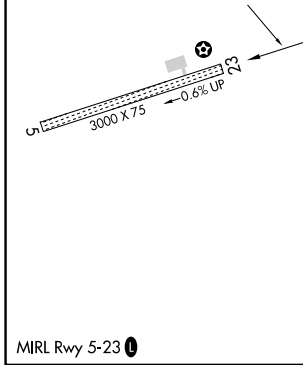
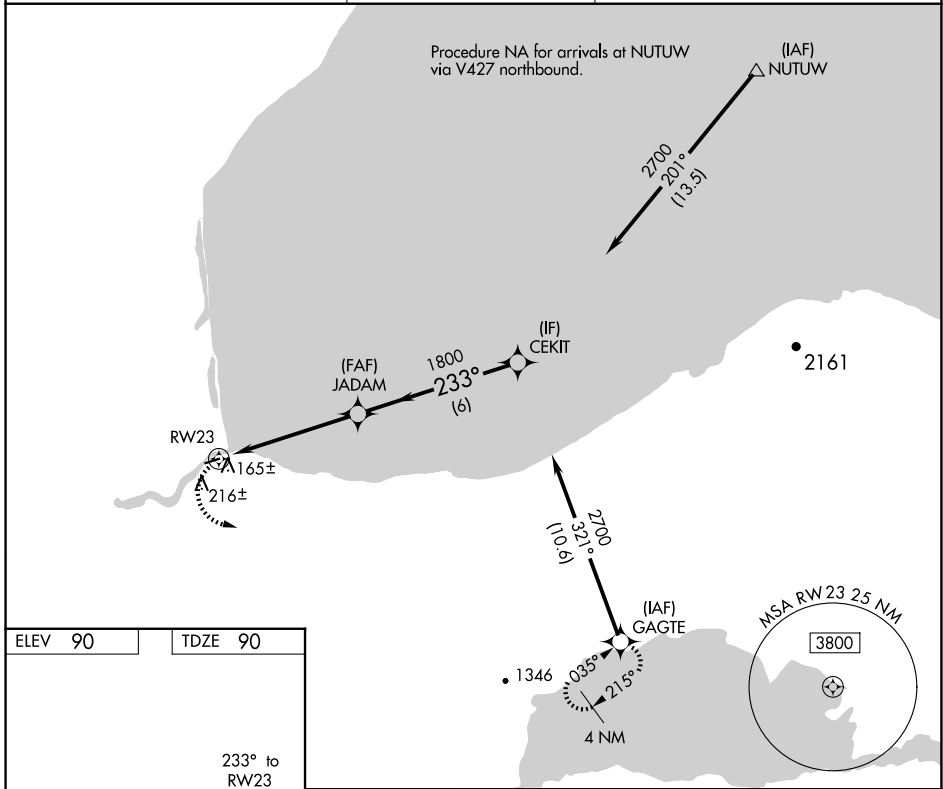
APP CRS <b>233°</b>	Rwy Idg <b>3000</b>
	TDZE <b>90</b>
	Apt Elev <b>90</b>

# RNAV (GPS) RWY 23

IGIUGIG (IGG)(PAIG)

RNP APCH-GPS.	MISSED APPROACH: Climbing left turn to 4000 direct GAGTE and hold.
<p><b>⚠</b> If local altimeter setting not received, use Iliamna altimeter setting and increase all MDAs 120 feet.</p>	

AWOS-3P <b>119.925</b>	ANCHORAGE CENTER <b>118.8</b>	CTAF <b>122.8</b>
---------------------------	----------------------------------	----------------------



4000	GAGTE	* VDP NA with Iliamna altimeter setting.	CEKIT	
		JADAM	2700	
		* 1.3 NM to RWY 23	Procedure Turn NA	
		RWY 23	1800	
		3.04° TCH 40		
		1.3 3.9 NM 6 NM		
CATEGORY	A	B	C	D
LNAV MDA	440-1	350 (400-1)	NA	
CIRCLING	580-1 490 (500-1)	660-1 570 (600-1)	NA	

AK, 20 FEB 2025 to 17 APR 2025

AK, 20 FEB 2025 to 17 APR 2025