

| | | |
|-------------|----------|-------------|
| APP CRS | Rwy Idg | 3000 |
| 122° | TDZE | 13 |
| | Apt Elev | 18 |

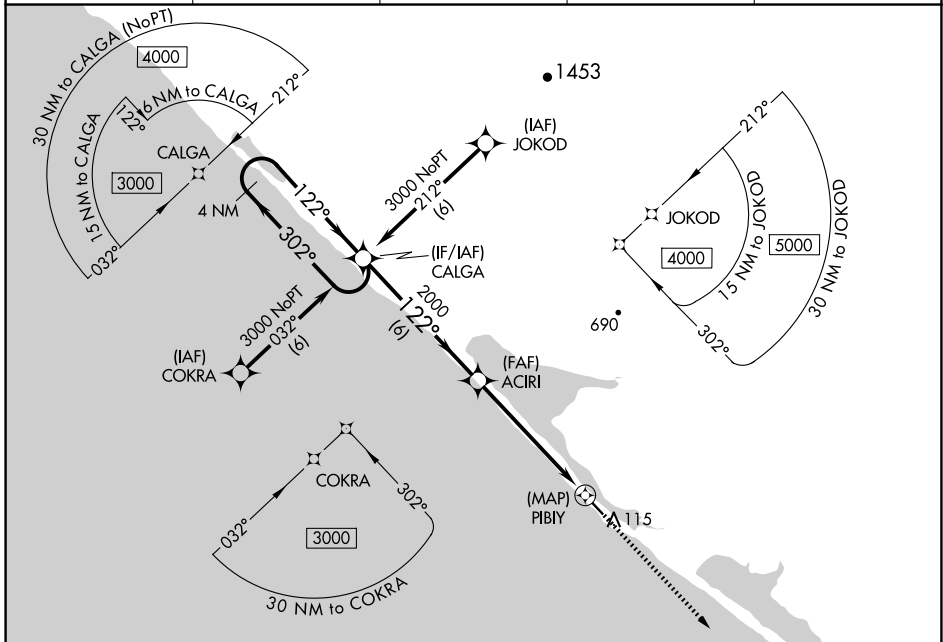
RNAV (GPS) RWY 12

KIVALINA (KVL)(PAVL)

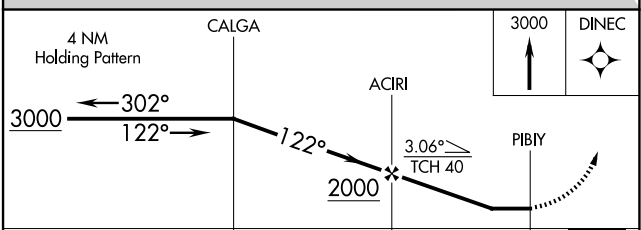
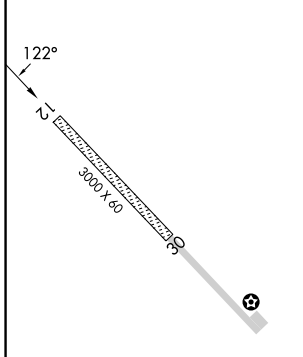
⚠ DME/DME RNP-0.3 NA. When local altimeter setting not received, use Noatak altimeter setting and increase all MDAs 340 feet and LNAV Cat C visibility 1 SM and Circling Cat B visibility ¼ SM, Cat C 1 ¼ SM.

MISSED APPROACH: Climb to 3000 direct DINEC and hold.

| | | | | |
|--------------|------------------|--------------------|----------------|-----------------------|
| ASOS | WTK/PAWN AWOS-3P | ANCHORAGE CENTER | KOTZEBUE RADIO | UNICOM |
| 135.8 | 135.75 | 119.2 263.0 | 122.55 | 122.8 (CTAF) 0 |



| | |
|---------|---------|
| ELEV 18 | TDZE 13 |
|---------|---------|



| CATEGORY | A | B | C | D |
|----------|----------------------|----------------------|------------------------|----|
| LNAV MDA | 340-1 327 (400-1) | | | NA |
| CIRCLING | 440-1 422 (500-1) | 560-1 542 (600-1) | 560-1½ 542 (600-1½) | NA |

AK, 20 FEB 2025 to 17 APR 2025

AK, 20 FEB 2025 to 17 APR 2025