

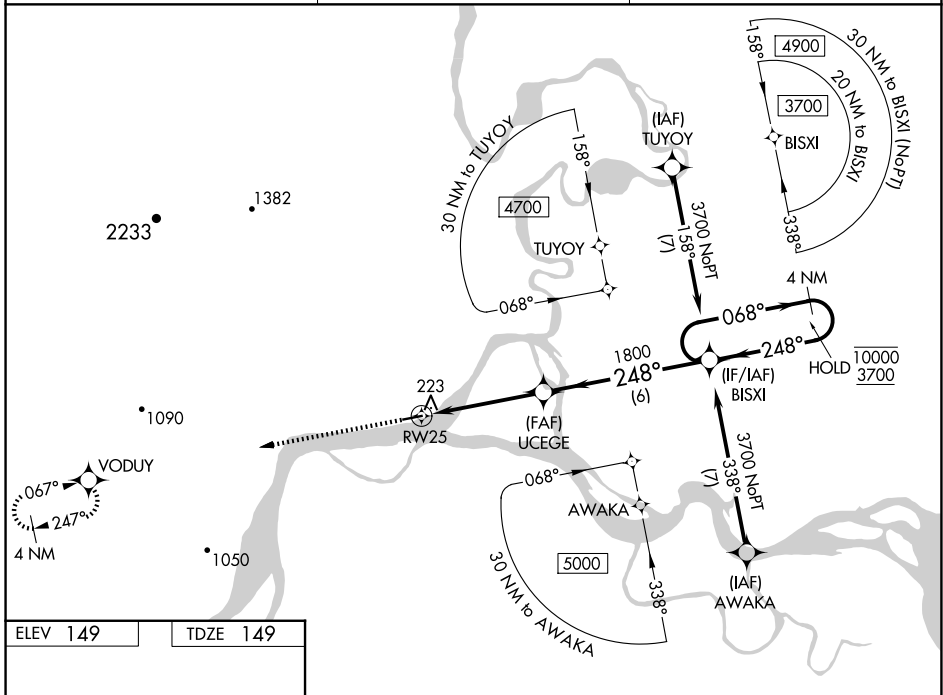
WAAS CH 99314 W25A	APP CRS 248°	Rwy Idg TDZE Apt Elev	4000 149 149
--	------------------------	-----------------------------	---

RNAV (GPS) RWY 25

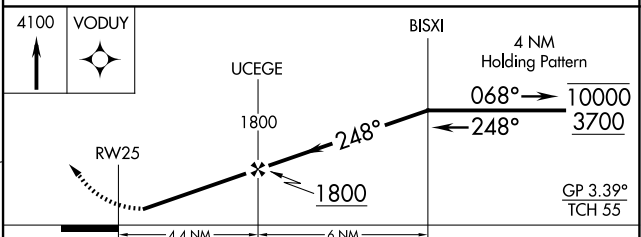
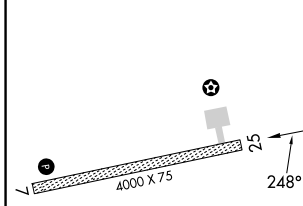
KOYUKUK (KYU) (PFKU)

RNP APCH-GPS.	Rwy 25 helicopter visibility reduction below 1 SM NA. Baro-VNAV NA. NA Use Galena altimeter setting; when not received, procedure NA. Straight-in Rwy 25 NA at night, Circling Rwy 25 NA at night.	MISSED APPROACH: Climb to 4100 direct VODUY and hold, continue climb-in-hold to 4100.
---------------	--	---

GAL/PAGA AWOS-3P 132.525	ANCHORAGE CENTER 127.0 290.2	CTAF 122.9
------------------------------------	--	----------------------



ELEV 149	TDZE 149
----------	----------



CATEGORY	A	B	C	D
LPV DA		471-1 322 (400-1)		NA
LNAV/VNAV DA		471-1 322 (400-1)		NA
LNAV MDA	720-1	571 (600-1)	720-1½ 571 (600-1½)	NA
CIRCLING	720-1 571 (600-1)	900-1 751 (800-1)	1320-3 1171 (1200-3)	NA

REIL Rwy 7
MIRL Rwy 7-25

KOYUKUK, ALASKA
Amdt 1 02DEC21
64°53'N-157°44'W

RNAV (GPS) RWY 25

AK, 20 FEB 2025 to 17 APR 2025

AK, 20 FEB 2025 to 17 APR 2025