

WAAS CH 77807 W21A	APP CRS 211°	Rwy Idg 4000
	TDZE 658	
	Apt Elev 658	

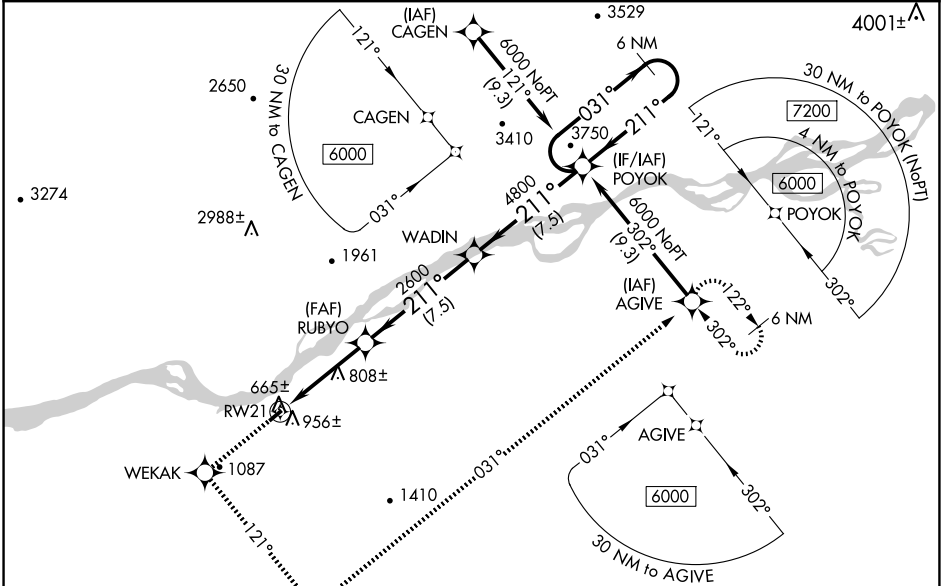
RNAV (GPS) RWY 21

RUBY (RBY) (PARY)

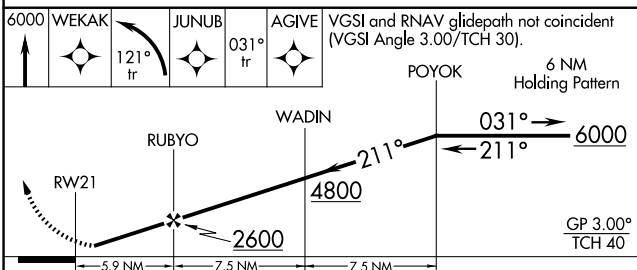
⚠ Baro-VNAV NA when using Galena altimeter setting. For uncompensated Baro-VNAV systems, LNAV/VNAV NA below -16°C (4°F) or above 54°C (130°F). DME/DME RNP-0.3 NA. Visibility reduction by helicopters NA. When local altimeter setting not received, use Galena altimeter setting and increase all DA/MDA 340 feet and all visibilities 1 SM.

MISSED APPROACH: Climb to 6000 direct WEKAK and left turn via 121° track to JUNUB and via 031° track to AGIVE and hold.

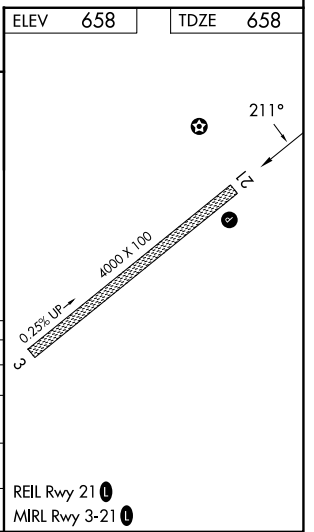
AWOS-3P 118.25	ANCHORAGE CENTER 127.0 290.2	FAIRBANKS RADIO 122.25	CTAF 122.8 0
--------------------------	--	----------------------------------	-------------------------------



ELEV 658	TDZE 658
----------	----------



CATEGORY	A	B	C	D
LPV DA	919-1	261 (300-1)		NA
LNAV/VNAV DA	1199-2	541 (600-2)		NA
LNAV MDA	1220-1	562 (600-1)	1220-1½ 562 (600-1½)	NA
CIRCLING	1260-1 602 (700-1)	1400-1 742 (800-1)	1400-2¼ 742 (800-2¼)	NA



AK, 20 FEB 2025 to 17 APR 2025

AK, 20 FEB 2025 to 17 APR 2025