

WAAS CH 45743 W33A	APP CRS 333°	Rwy Idg TDZE Apt Elev	3100 192 192
--	------------------------	-----------------------------	---

RNAV (GPS) RWY 33

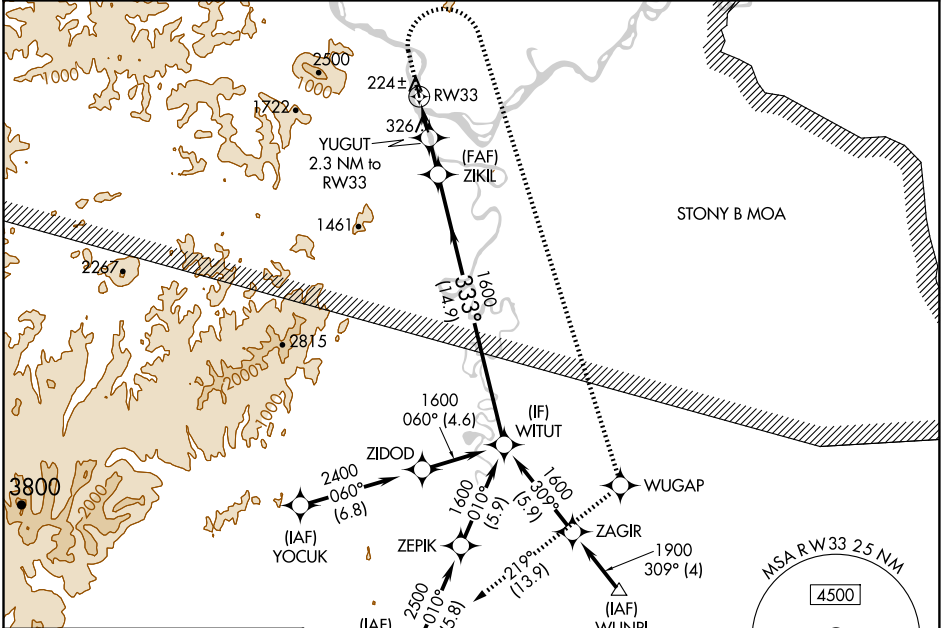
SLEETMUTE (SLQ)(P)ASL

RNP APCH.

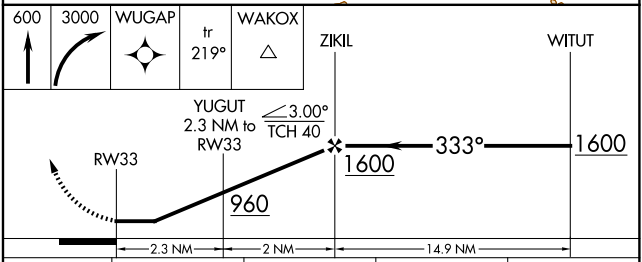
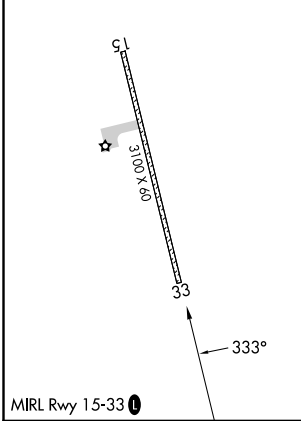
T Circling NA west of Rwy 15-33. Procedure NA at night.
A Rwy 33 helicopter visibility reduction below 1 SM NA.
C -36°C

MISSED APPROACH: Climb to 600, then climbing right turn to 3000 direct WUGAP, then track 219° to WAKOX and hold.

AWOS-3P 134.85	ANCHORAGE CENTER 128.5 379.9	UNICOM 122.8 (CTAF)
--------------------------	--	-------------------------------



ELEV 192	TDZE 192
----------	----------



CATEGORY	A	B	C	D
LP MDA	580-1	388 (400-1)	NA	
LNAV MDA	900-1	708 (800-1)	NA	
C CIRCLING	900-1 708 (800-1)	960-1 768 (800-1)	NA	

AK, 20 FEB 2025 to 17 APR 2025

AK, 20 FEB 2025 to 17 APR 2025