

(EZEPU1.EZEPU) 24193

AL-10177 (FAA)

TUNUNAK (4KA)(POKA)
TUNUNAK, ALASKA

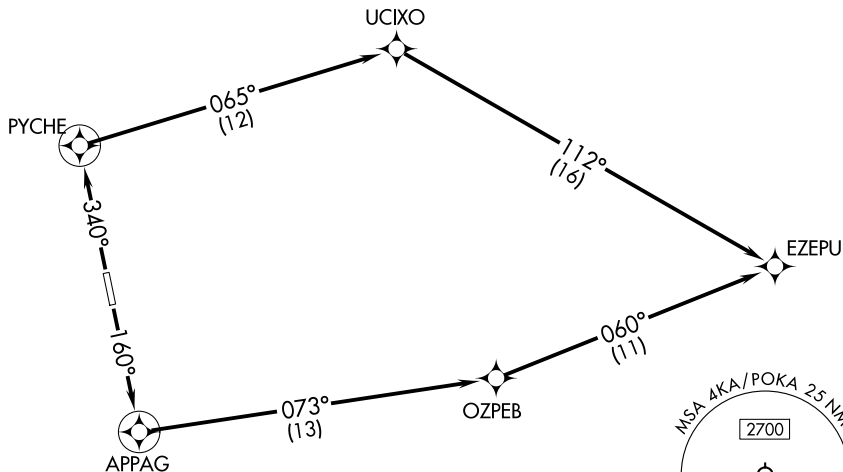
EZEPU ONE DEPARTURE (OBSTACLE) (RNAV)

ANCHORAGE CENTER
125.2 372.0
OOK/PAOO AWOS-3P
119.275

RNAV 1 - GPS.

TAKEOFF MINIMUMS

Rwy 16: Standard with minimum climb of 287'/NM to 1100.
Rwy 34: 600-2½ with minimum climb of 214'/NM to 1500
or standard with minimum climb of 420'/NM to 800.



TAKEOFF OBSTACLE NOTES

Rwy 16: Terrain 2' from DER, 497' left of centerline, 65' MSL.

Vehicle on road 9' from DER, 46' right of centerline, 63' MSL.

Terrain 498' from DER, 597' left of centerline, 80' MSL.

Terrain, vegetation, beginning 697' from DER, 384' left of centerline, up to 92' MSL.

Terrain beginning 897' from DER, 398' left of centerline, up to 100' MSL.

Terrain beginning 1095' from DER, 369' left of centerline, up to 109' MSL.

Terrain, vegetation, beginning 1297' from DER, 291' left of centerline, up to 128' MSL.

Terrain beginning 1474' from DER, 357' left of centerline, up to 133' MSL.

Terrain beginning 1696' from DER, 597' left of centerline, up to 136' MSL.

Terrain 1834' from DER, 798' left of centerline, 137' MSL.

Terrain, vegetation, beginning 1892' from DER, 494' left of centerline, up to 155' MSL.

Terrain beginning 2020' from DER, 598' left of centerline, up to 157' MSL.

Vegetation, terrain beginning 2217' from DER, 797' left of centerline, up to 7' AGL/158' MSL.

Rwy 34: Catenary wires 950' from DER, 730' left of centerline, 40' AGL/81' MSL.

Vehicles on road, terrain beginning 1.2 NM from DER, 1914' right of centerline, 264' MSL.

Vehicles on road, terrain beginning 1.3 NM from DER, 1997' right of centerline, up to 329' MSL.

Vehicles on road, terrain beginning 1.4 NM from DER, 1998' right of centerline, up to 415' MSL.

Terrain beginning 1.5 NM from DER, 1797' right of centerline, up to 558' MSL.

Terrain beginning 1.6 NM from DER, 1798' right of centerline, up to 575' MSL.

Terrain beginning 1.8 NM from DER, 3498' right of centerline, 494' MSL.

NOTE: Chart not to scale.

DEPARTURE ROUTE DESCRIPTION

TAKEOFF RUNWAY 16: Climb on course 160° to APPAG, then on track 073° to OZPEB, then on track 060° to EZEPU, thence. . .

TAKEOFF RUNWAY 34: Climb on course 340° to PYCHE, then on track 065° to UCIXO, then on track 112° to EZEPU, thence. . .

. . . on filed route and altitude.

EZEPU ONE DEPARTURE (OBSTACLE) (RNAV)

(EZEPU1.EZEPU) 11JUL24

TUNUNAK, ALASKA
TUNUNAK (4KA)(POKA)

AK, 20 FEB 2025 to 17 APR 2025

AK, 20 FEB 2025 to 17 APR 2025