

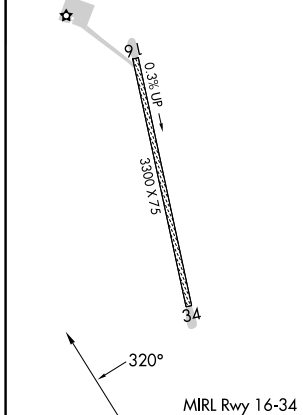
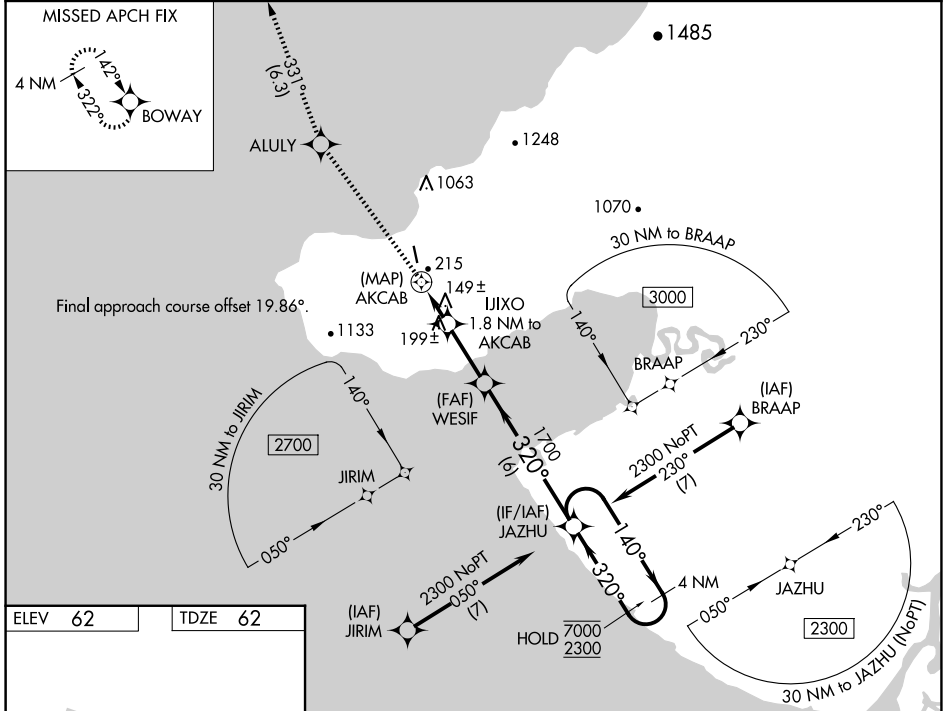
WAAS CH 86845 W34A	APP CRS 320°	Rwy Idg TDZE Apt Elev	3300 62 62
--	------------------------	-----------------------------	---------------------------------------

RNAV (GPS) RWY 34

TUNUNAK (4KA) (POKA)

RNP APCH - GPS.	MISSED APPROACH: Climb to 500, then climb to 2400 direct ALULY then on track 331° to BOWAY and hold.
<p>⚠ Circling NA east of Rwy 16-34. Rwy 34 helicopter visibility reduction below 3/4 SM NA. When local altimeter setting not received, use Toksook Bay altimeter setting and increase all MDAs 20 feet and LNAV visibility Cat C 1/8 SM.</p>	

AWOS-3P 118.25	ANCHORAGE CENTER 125.2 372.0	CTAF 122.9
--------------------------	--	----------------------



ELEV 62	TDZE 62	500		2400	ALULY	tr 331°	BOWAY	JAZHU	4 NM Holding Pattern	
		↑		↑	✧		✧	140° → 7000	← 320° 2300	
		AKCAB		JAZHU	WESIF	1700				
		1.8 NM to AKCAB		≤ 3.00° TCH 40		900				
		0.7	1.8 NM	2.5 NM	6 NM					
CATEGORY	A	B	C	D						
LP MDA	400-1 338 (400-1)				NA					
LNAV MDA	480-1	418 (500-1)	480-1 1/8 418 (500-1 1/8)		NA					
CIRCLING	480-1 418 (500-1)	600-1 538 (600-1)	1120-3 1058 (1100-3)		NA					

AK, 20 FEB 2025 to 17 APR 2025

AK, 20 FEB 2025 to 17 APR 2025