

APP CRS	Rwy Idg	<b>4001</b>
<b>230°</b>	TDZE	<b>448</b>
	Apt Elev	<b>448</b>

# RNAV (GPS) RWY 23

NIKOLAI (F/SP)(P/AFS)

RNP APCH.

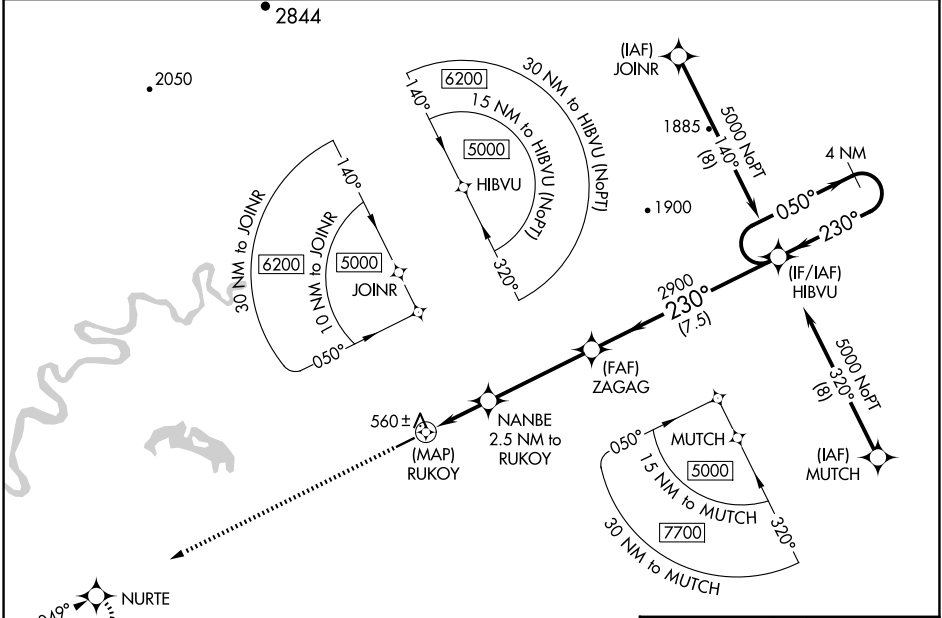
▼ Rwy 23 helicopter visibility reduction below 3/4 SM NA.

MISSED APPROACH: Climb to 3000 direct NURTE and hold.

AWOS-3P  
**118.325**

ANCHORAGE CENTER  
**128.1 353.8**

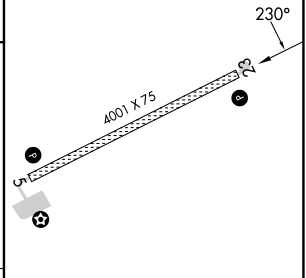
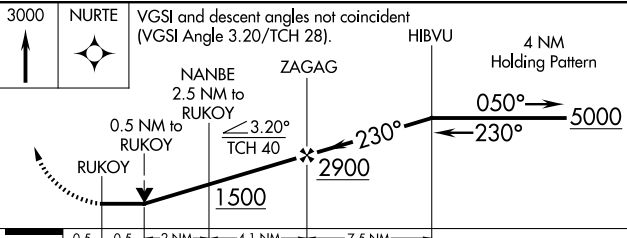
CTAF  
**122.8**



AK, 20 FEB 2025 to 17 APR 2025

AK, 20 FEB 2025 to 17 APR 2025

ELEV 448	TDZE 448
----------	----------



CATEGORY	A	B	C	D
LNVA MDA	820-1 372 (400-1)			
CIRCLING	860-1	900-1	900-1½	1000-2
	412 (500-1)	452 (500-1)	452 (500-1½)	552 (600-2)

MIRL Rwy 5-23  
REIL Rws 5 and 23