



APP CRS	Rwy Idg	4001
049°	TDZE	448
	Apt Elev	448

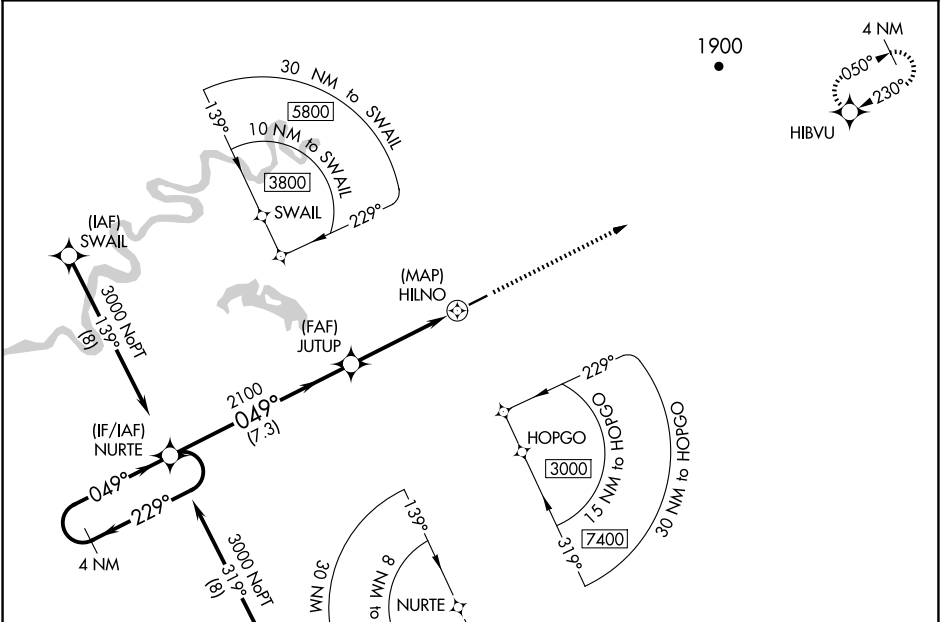
RNAV (GPS) RWY 5

NIKOLAI (FSP)(PAFS)

RNP APCH.
 Rwy 5 helicopter visibility reduction below 3/4 SM NA.

MISSED APPROACH: Climb to 5000 direct HIBVU and hold, continue climb-in-hold to 5000.

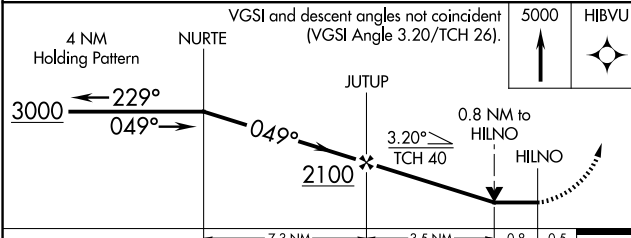
AWOS-3P 118.325	ANCHORAGE CENTER 128.1 353.8	CTAF 122.8 
---------------------------	--	--




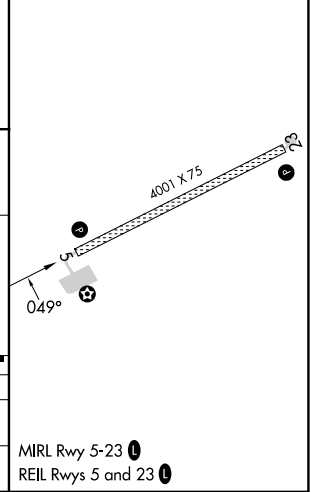
AK, 20 FEB 2025 to 17 APR 2025


AK, 20 FEB 2025 to 17 APR 2025

ELEV 448	TDZE 448
----------	----------



CATEGORY	A	B	C	D
LNVA MDA	900-1	452 (500-1)	900-1 3/8	452 (500-1 3/8)
 CIRCLING	900-1	452 (500-1)	900-1 1/2	1000-2
			452 (500-1 1/2)	552 (600-2)



MIRL Rwy 5-23 
 REIL Rws 5 and 23 