

APP CRS	Rwy Idg	<b>4466</b>
<b>105°</b>	TDZE	<b>380</b>
	Apt Elev	<b>393</b>

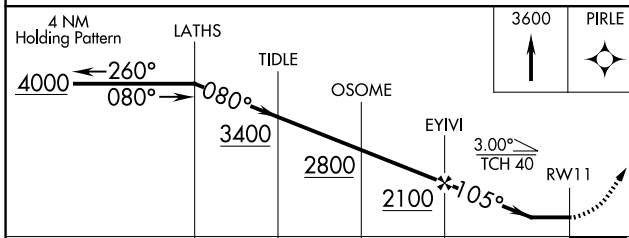
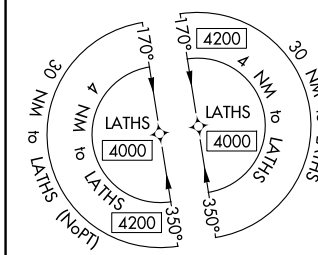
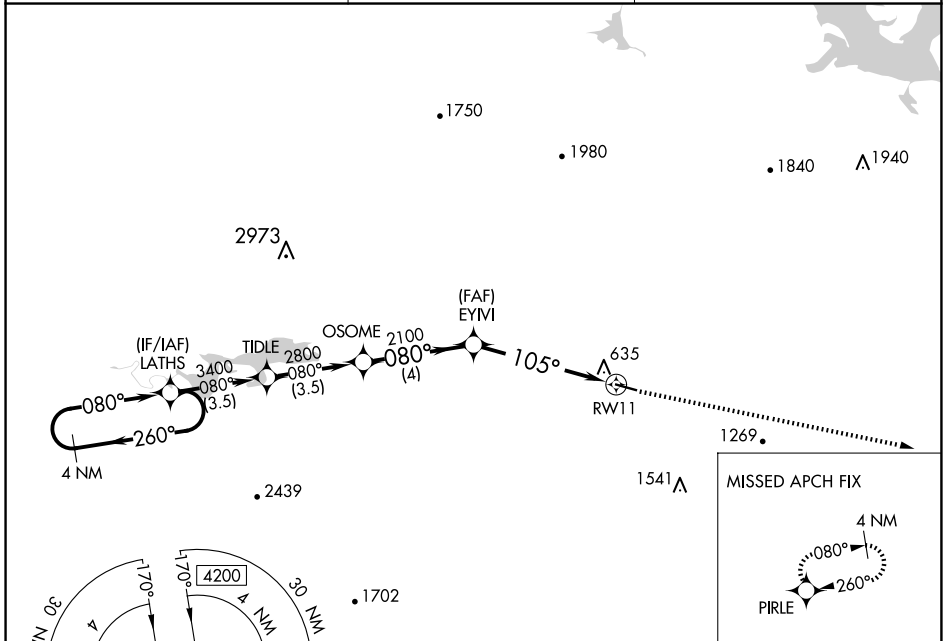
# RNAV (GPS) RWY 11

DANVILLE MUNI (32A)

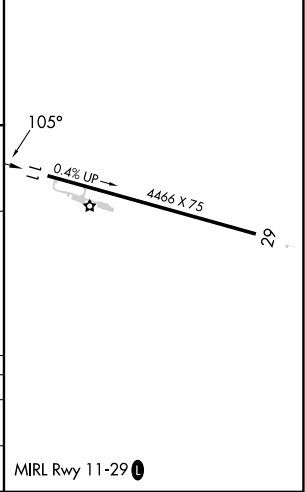
**NA** Circling NA for Cat D south of Rwy 11-29. DME/DME RNP-0.3 NA.  
 Procedure NA at night. Helicopter visibility reduction below 1 SM NA.  
 Use Russellville Rgnl altimeter setting, when not received procedure NA.

**MISSED APPROACH:**  
 Climb to 3600 direct PIRLE and hold.

RUE ASOS <b>132.475</b>	MEMPHIS CENTER <b>128.475 377.15</b>	CTAF <b>122.90</b>
----------------------------	---	-----------------------



ELEV 393	TDZE 380
----------	----------



CATEGORY	A	B	C	D
LNAV MDA	940-1	560 (600-1)	940-1½	560 (600-1½)
<b>CIRCLING</b>	1040-1 647 (700-1)	1060-1 667 (700-1)	1060-1¾ 667 (700-1¾)	1480-3 1087 (1100-3)

MIRL Rwy 11-29

SC-1, 20 FEB 2025 to 20 MAR 2025

SC-1, 20 FEB 2025 to 20 MAR 2025