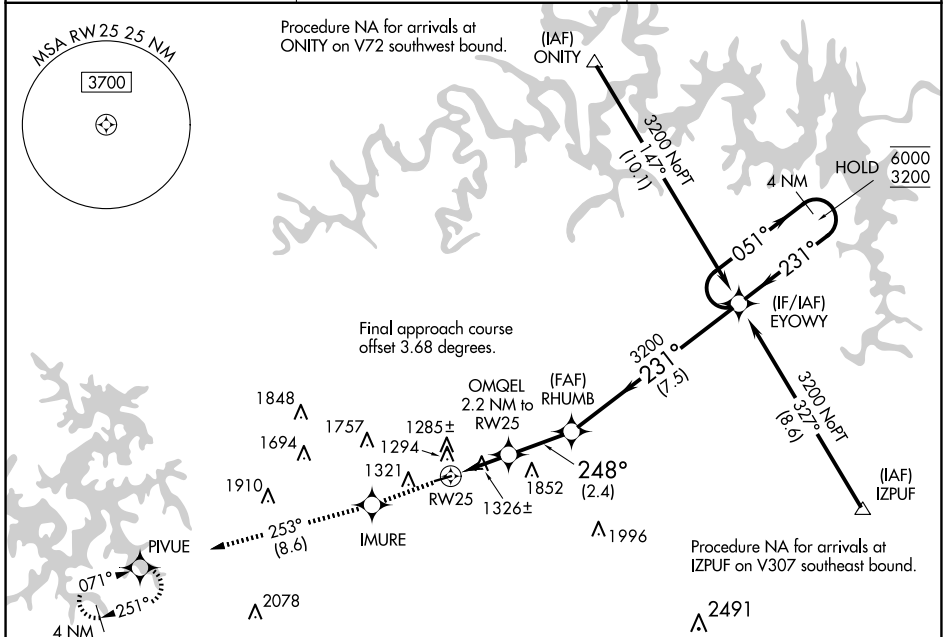


WAAS CH 86442 W25A	APP CRS 248°	Rwy Idg TDZE 1206 Apt Elev 1206	3555
--	------------------------	---	-------------

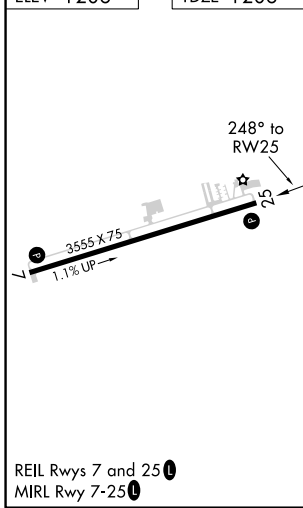
RNAV (GPS) RWY 25

CARROLL COUNTY (4M1)

RNP APCH-GPS.		MISSED APPROACH: Climb to 3300 direct IMURE and on track 253° to PIVUE and hold.
<p>▼ Rwy 25 helicopter visibility reduction below 3/4 SM NA. Use Branson altimeter setting; when not received, use Rogers altimeter setting and increase all MDA 20 feet. Circling Rwy 7 NA at night.</p> <p>▲ NA</p>		
BBG AWOS-3 124.625	RAZORBACK APPROACH* 126.6 305.2	CTAF 122.90



ELEV 1206	TDZE 1206
-----------	-----------



3300	IMURE	tr 253°	PIVUE	VGSI and descent angles not coincident (VGSI Angle 3.00/TCH 22).	RHUMB	EYOWY	4 NM Holding Pattern
CATEGORY	A	B	C	D			
LP MDA	1660-1	454 (500-1)			NA		
LNAV MDA	1660-1	454 (500-1)			NA		
C CIRCLING	1700-1 494 (500-1)	1980-1 774 (800-1)			NA		

SC-1, 20 FEB 2025 to 20 MAR 2025

SC-1, 20 FEB 2025 to 20 MAR 2025