

WAAS CH 62838 W05A	APP CRS 051°	Rwy Idg TDZE 954 Apt Elev 964	4003
--	------------------------	---	-------------

RNAV (GPS) RWY 5

SEARCY COUNTY (4A5)

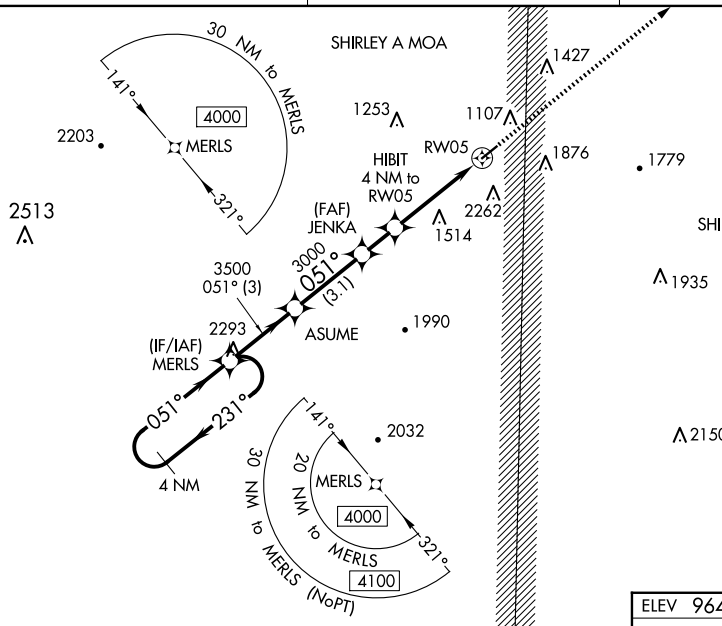
▽ DME/DME RNP-0.3 NA. Circling NA SE of Rwy 5-23. Night Landing: Rwy 23 NA.
△ Baro-VNAV NA. Use Flippin altimeter setting; when not received, use Harrison altimeter setting and increase all Cats LPV DA to 1396 and visibility 1/8 mile. LNAV/VNAV all Cats DA to 1981, and all MDA 60 feet. Helicopter visibility reduction below 3/4 SM NA.

MISSED APPROACH:
Climb to 4000 direct DULLS and hold.

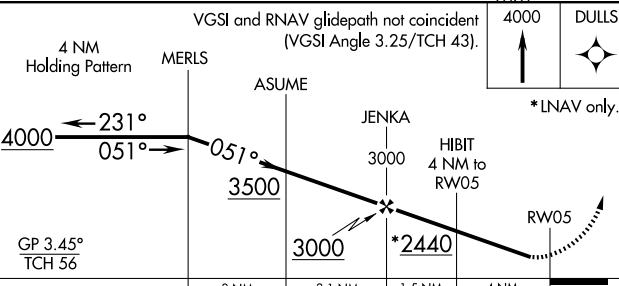
FLP AWOS-3
132.075

MEMPHIS CENTER
126.85 281.55

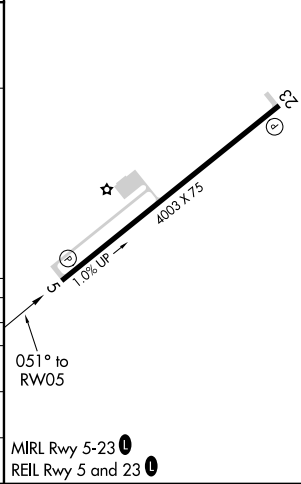
CTAF
122.9



ELEV 964	TDZE 954
----------	----------



CATEGORY	A	B	C	D
LPV DA	1353-1¼	399 (400-1¼)		NA
LNAV/VNAV DA	1938-3	984 (1000-3)		NA
LNAV MDA	1920-1¼ 966 (1000-1¼)	1920-1½ 966 (1000-1½)	1920-3 966 (1000-3)	NA
CIRCLING	1920-1¼ 956 (1000-1¼)	1920-1½ 956 (1000-1½)	1920-3 956 (1000-3)	NA



SC-1, 20 FEB 2025 to 20 MAR 2025

SC-1, 20 FEB 2025 to 20 MAR 2025