

WAAS CH 50346 W35A	APP CRS 345°	Rwy Idg TDZE 63 Apt Elev 63	3601
--	------------------------	---	-------------

RNAV (GPS) RWY 35

AUBURN MUNI (S5 \emptyset)

RNP APCH - GPS.
 ⚠️ Circling NA west of Rwy 17-35. Baro-VNAV NA. Rwy 35 helicopter visibility reduction below 1 SM NA. Circling Rwy 17 NA at night. Use Seattle-Tacoma Intl altimeter setting.

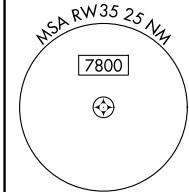
MISSED APPROACH: Climb to 700 then climbing right turn to 4400 direct CMNDR and hold, continue climb-in-hold to 4400.

SEA ASOS 118.0	SEATTLE APP CON 123.85	CLNC DEL 123.85	UNICOM 122.975 (CTAF) \emptyset
--------------------------	----------------------------------	---------------------------	---

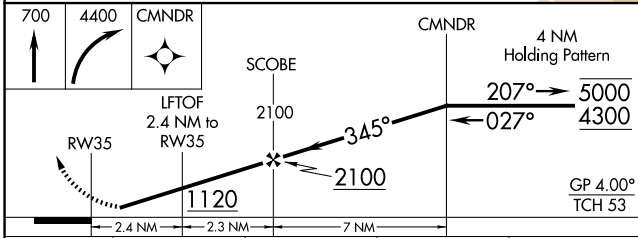


NW-1, 20 FEB 2025 to 20 MAR 2025

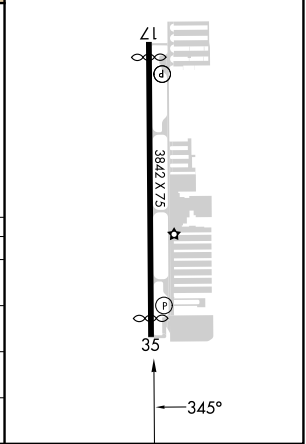
NW-1, 20 FEB 2025 to 20 MAR 2025



(IAF) CIDUG Δ Procedure NA for arrivals at CIDUG on V495 southbound.
 HOLD 5000 / 4300
 4300 NoPT 027° (9.7)
 2100 (7)
 345°
 838 (FAF) SCOBCE
 LFTOF 2.4 NM to RWY 35
 245± Δ RWY 35
 680± Δ 624 Δ 463± Δ 642 Δ 723± Δ 633 Δ 421 Δ 684 Δ 772± Δ 1280 Δ 2075± Δ 3570 Δ 3921 Δ 3985 Δ 1523± Δ 5941 Δ 2058± Δ 2440 Δ 1801 Δ 772 Δ 708 Δ 542 Δ 772 Δ



ELEV 63	TDZE 63
---------	---------



CATEGORY	A	B	C	D
LPV DA	459-1 $\frac{1}{8}$	396 (400-1 $\frac{1}{8}$)		NA
LNAV/VNAV DA	702-1 $\frac{3}{4}$	639 (700-1 $\frac{3}{4}$)		NA
LNAV MDA	740-1	677 (700-1)		NA
CIRCLING	920-1 $\frac{1}{4}$ 857 (900-1 $\frac{1}{4}$)	1040-1 $\frac{1}{2}$ 977 (1000-1 $\frac{1}{2}$)		NA