

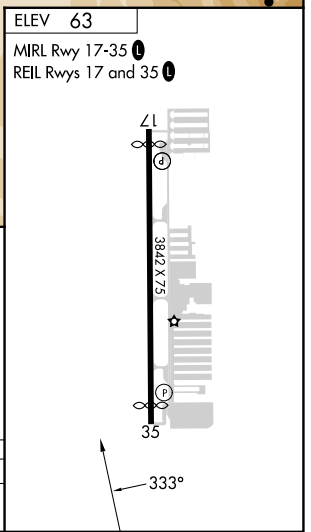
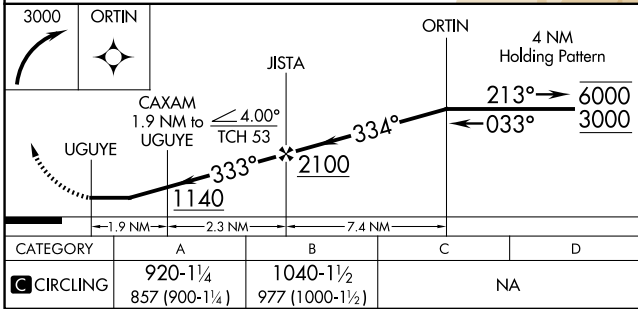
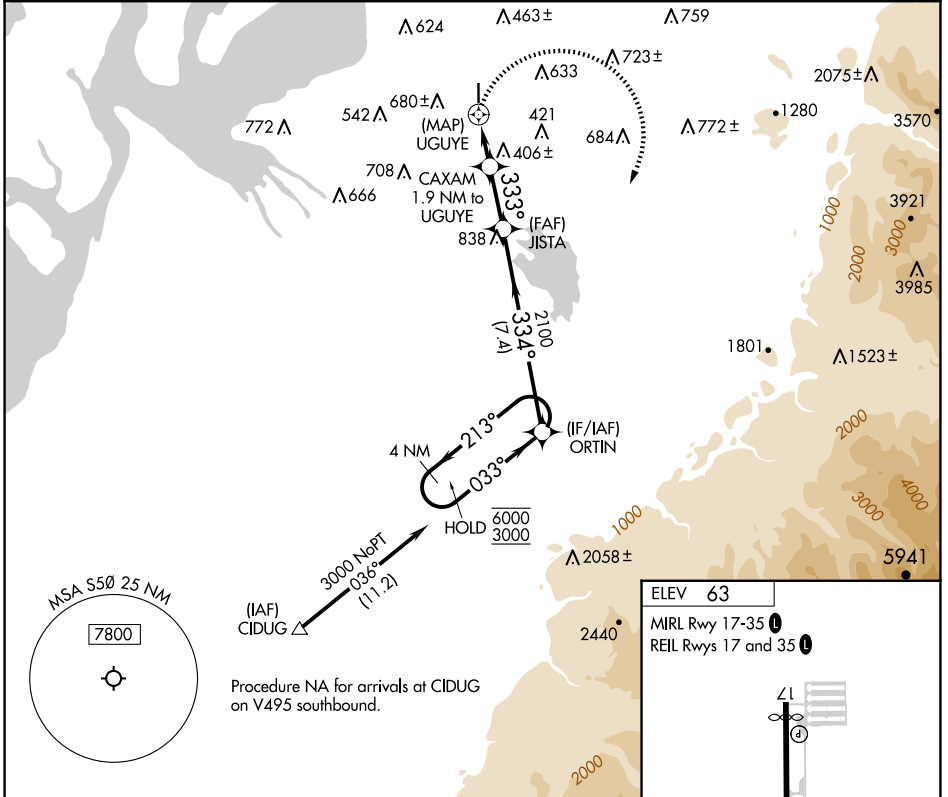
APP CRS	Rwy Idg	N/A
333°	TDZE	N/A
	Apt Elev	63

# RNAV (GPS)-A

AUBURN MUNI (S50)

RNP APCH - GPS.	<p><b>NA</b> Circling NA west of Rwy 17-35. Rwy 17 and 35 helicopter visibility reduction below 1 SM NA. When Circling to Rwy 17, 35 at night, operational VGSI required, remain on or above VGSI glidepath until threshold. Use Seattle-Tacoma Intl altimeter setting. Procedure NA at night when VGSI inoperative.</p>	<p>MISSED APPROACH: Climbing right turn to 3000 direct ORTIN and hold.</p>

SEA ASOS <b>118.0</b>	SEATTLE APP CON <b>123.85</b>	CLNC DEL <b>123.85</b>	UNICOM <b>122.975</b> (CTAF) <b>1</b>
--------------------------	----------------------------------	---------------------------	--



NW-1, 20 FEB 2025 to 20 MAR 2025

NW-1, 20 FEB 2025 to 20 MAR 2025