

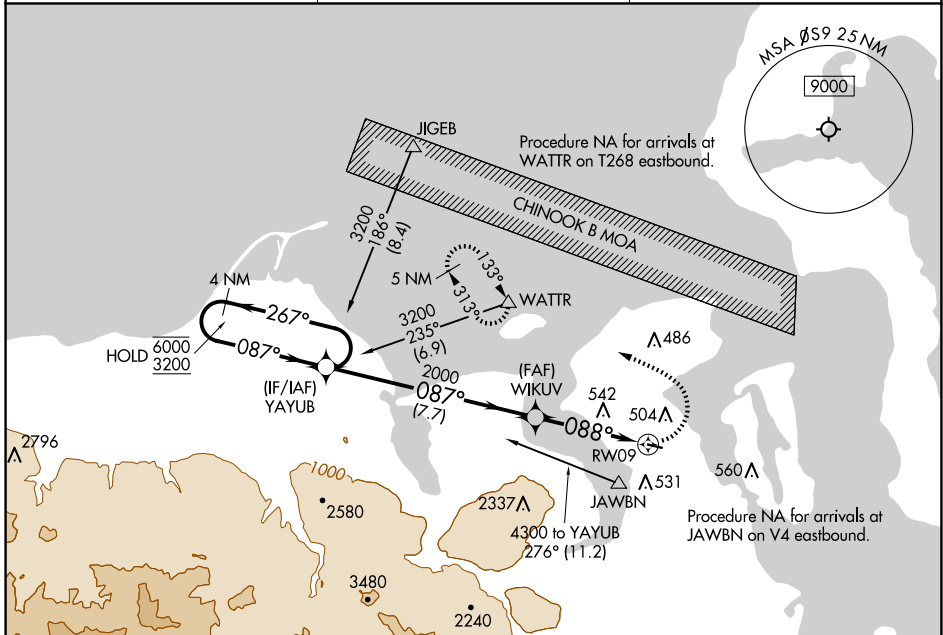
APP CRS	Rwy Idg	N/A
088°	TDZE	N/A
	Apt Elev	110

RNAV (GPS)-A

JEFFERSON COUNTY INTL (ØS9)

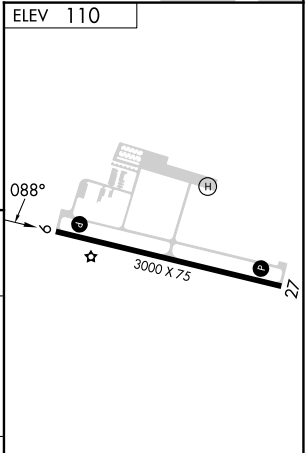
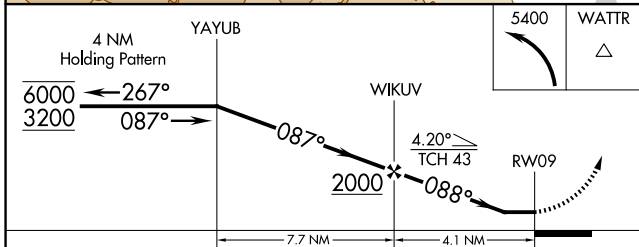
RNP APCH - GPS.	MISSED APPROACH: Climbing left turn to 5400 direct WATTR and hold, continue climb-in-hold to 5400.
<p>▼ Procedure NA at night. Rwy 9, 27 helicopter visibility reduction below 1 SM NA.</p> <p>▲</p>	

AWOS-3P 119.025	WHIDBEY APP CON 118.2	UNICOM 123.0 (CTAF) 0
---------------------------	---------------------------------	---------------------------------



NW-1, 20 FEB 2025 to 20 MAR 2025

NW-1, 20 FEB 2025 to 20 MAR 2025



CATEGORY	A	B	C	D
CIRCLING	960-1¼ 850 (900-1¼)	980-1¼ 870 (900-1¼)	NA	

REIL Rwy 9 0
MRL Rwy 9-27 0