

APP CRS 017°	Rwy Idg TDZE Apt Elev	4500 2087 2092
------------------------	-----------------------------	---

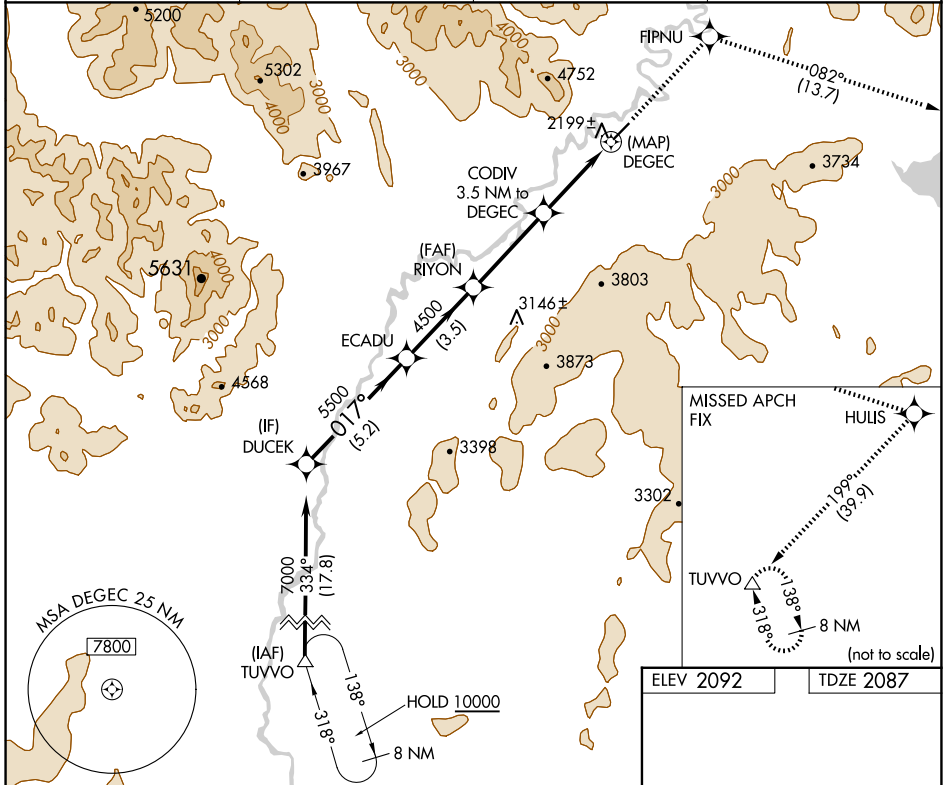
RNAV (GPS) RWY 2

ARCTIC VILLAGE (ARC)(PARC)

33 -37°C
DME/DME RNP-0.3 NA.
If local altimeter setting not received, procedure NA.

MISSED APPROACH: Climb to 10000 direct FIPNU and via 082° track to HULIS and right turn via 199° track to TUVVO and hold.

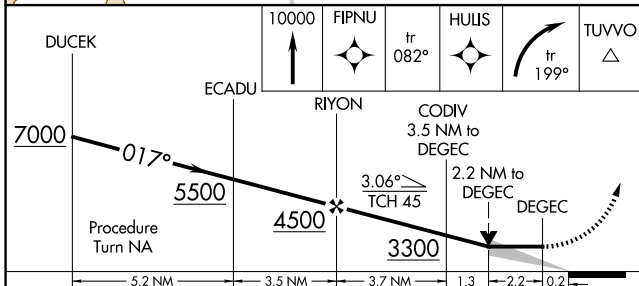
AWOS-3P 135.75	ANCHORAGE CENTER 135.0 225.4	FAIRBANKS RADIO 122.05	CTAF 122.9
--------------------------	--	----------------------------------	----------------------



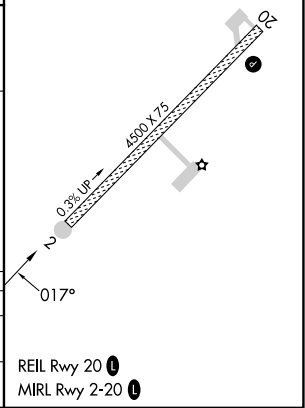
AK, 20 FEB 2025 to 17 APR 2025

AK, 20 FEB 2025 to 17 APR 2025

ELEV 2092	TDZE 2087
-----------	-----------



CATEGORY	A	B	C	D
LNVA MDA	2880-1 793 (800-1)	2880-1¼ 793 (800-1¼)		NA
CIRCLING	2880-1 788 (800-1)	2900-1¼ 808 (900-1¼)		NA



REIL Rwy 20 **1**
MIRL Rwy 2-20 **1**