

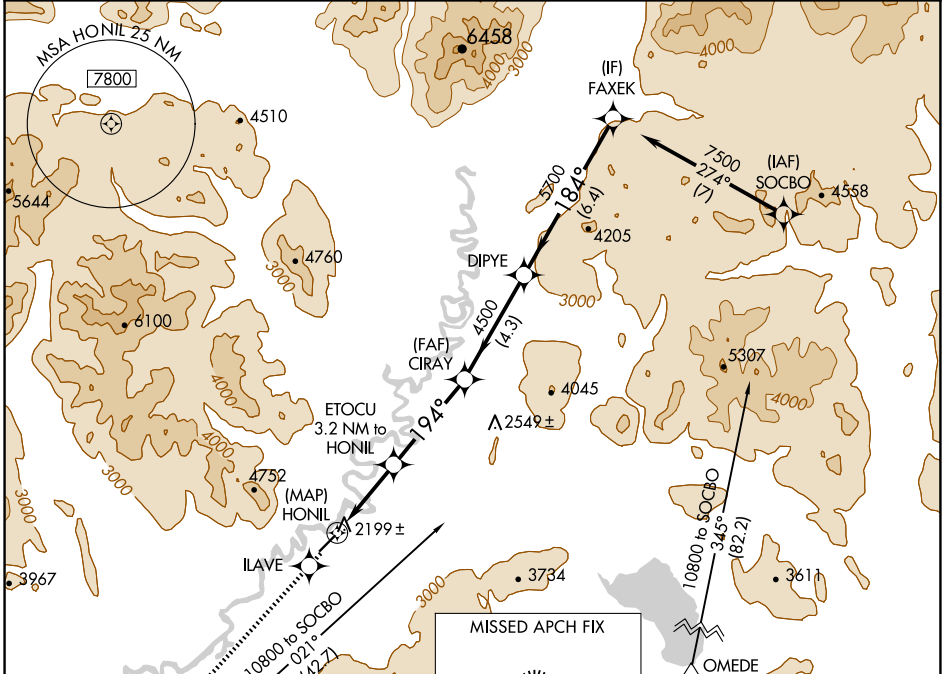
APP CRS <b>194°</b>	Rwy Idg <b>4500</b>
	TDZE <b>2092</b>
	Apt Elev <b>2092</b>

# RNAV (GPS) RWY 20

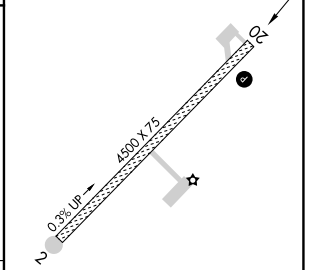
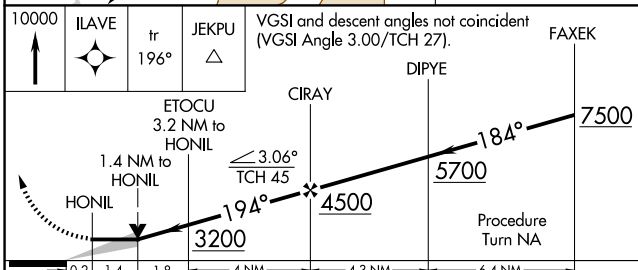
ARCTIC VILLAGE (ARC)(PARC)

-37°C	DME/DME RNP-0.3 NA. If local altimeter setting not received, procedure NA.	MISSED APPROACH: Climb to 10000 direct ILAVE and via 196° track to JEKPU and hold, continue climb-in-hold to 10000.
-------	---	---

AWOS-3P <b>135.75</b>	ANCHORAGE CENTER <b>135.0 225.4</b>	FAIRBANKS RADIO <b>122.05</b>	CTAF <b>122.9</b>
--------------------------	--	----------------------------------	----------------------



ELEV	2092	TDZE	2092
------	------	------	------



CATEGORY	A	B	C	D
LNVA MDA	2600-1	508 (600-1)		NA
CIRCLING	2700-1 608 (700-1)	2900-1 808 (900-1)		NA

REIL Rwy 20

MIRL Rwy 2-20

AK, 20 FEB 2025 to 17 APR 2025

AK, 20 FEB 2025 to 17 APR 2025